

ABC
2025
HEALTH
AND SAFETY
PERFORMANCE
REPORT



MEASURE.



STRENGTHEN.



BUILD.

**ABC 75TH**
ANNIVERSARY

**ABC**
Associated Builders and Contractors

**STEP**
Health and Safety
Management System

ABC 2025 HEALTH AND SAFETY PERFORMANCE REPORT

UNDERSTANDING THE IMPACT OF DEPLOYING ABC'S STEP® HEALTH AND SAFETY MANAGEMENT SYSTEM ON OVERALL SAFETY PERFORMANCE

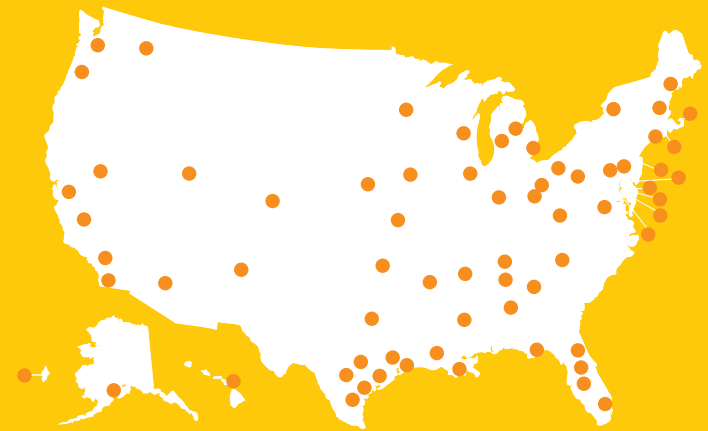
ABC engaged RSM, an independent third party and leading U.S. provider of audit, tax and consulting services, to recalculate ABC's calculations and check formulas used against published formula definitions. The 2024 STEP self-assessment data from ABC members was used to calculate the numbers reflected in the ABC 2025 Health and Safety Performance Report.

©2025 Associated Builders and Contractors Inc. All rights reserved.

Disclaimer:

The information in this report is for reference purposes only and reflects data submitted by ABC member companies during the 2024 STEP term, Jan. 15-Dec. 15, 2024. Any unauthorized use or distribution of this information without the express written consent of Associated Builders and Contractors Inc. (440 First St. NW, Suite 200, Washington, DC 20001) is strictly prohibited.

ABC Has 67 Chapters Nationwide



Celebrating its 75th anniversary in 2025, Associated Builders and Contractors is a national construction industry trade association established in 1950 with 67 chapters and more than 23,000 members. Founded on the merit shop philosophy, ABC helps members develop people, win work and deliver that work safely, ethically and profitably for the betterment of the communities in which ABC and its members work.

Visit us at [abc.org](https://www.abc.org).

You Can Achieve Industry-Leading Health and Safety. Start Today.

Executing on your commitment to industry-leading health and safety takes fortitude and effort, as it is fraught with leadership challenges. During this journey, leaders eventually ask themselves and their employees such questions as:

- Do we truly believe that all incidents are preventable?
- Are we unwilling to compromise someone's health and safety for profit, productivity, schedule or any other priority?


ABC provides the industry with four tools that help create the conditions for everyone to complete their work without incident and go home safe and healthy every day.

1 ABC's STEP is an industry-leading health and safety management system improved annually by the ABC National Health and Safety Committee.

2 The annual ABC Health and Safety Performance Report analyzes the cause-and-effect relationship between best-in-class processes and incident prevention.

3 ABC's Health and Safety Leadership Forum helps construction companies lay out a multiyear plan to achieve industry-leading safety results.

4 A suite of best practices and model policy supported by classroom and virtual education is delivered at national events and throughout our 67 chapters across the United States.

A headshot of Michael Bellaman, a middle-aged man with short, light-colored hair, wearing a dark suit, white shirt, and a patterned tie.

Michael Bellaman
President and CEO



Greg Sizemore
Vice President, HSE and
Workforce Development



Joseph Xavier
Senior Director,
Health and Safety

“ If we choose to lead, if we choose to commit, and if we choose to transform, together we will create the conditions for all to do their work without incident and go home safe and healthy every day.”

These tools provide leaders with a roadmap to win and deliver their work without incident:

Leadership commitment to an organization that creates the conditions for all to do their work without incident.

Cultural transformation into a company where every employee believes all incidents are preventable.

Deployment of an **industry-leading safety management system** throughout the organization with the desire to achieve best-in-class results.

Industry-leading results delivered using leading and trailing indicators to share successes and lessons learned with all employees.

I am confident the ABC 2025 Health and Safety Performance Report will help you on your journey. Please feel free to share the report widely with your teammates, specialty contractors, clients and competitors.

If we choose to lead, if we choose to commit and if we choose to transform, together we will create the conditions for all to do their work without incident and go home safe and healthy every day.



Michael Bellaman
President and CEO
Associated Builders and Contractors

TABLE OF CONTENTS

- 1 You Can Achieve Industry-Leading Health and Safety. Start Today.
- 5 What If Your Company Could Be Nearly 7 Times Safer Than the Industry Average?
- 8 Health and Safety Alliance
- 9 ABC Total HumanHealth
- 10 ABC Promotes Mental Well-Being
- 11 STEP Health and Safety Management System
- 13 The Roadmap to Industry-Leading Health and Safety
- 14 The Foundations of Industry-Leading Health and Safety
 - 15 New Hire Health and Safety Orientation
 - 16 Substance Abuse Prevention Programs
 - 18 Frequency of Toolbox Talks
 - 19 Top Management Engagement
 - 20 Leading Indicators
- 21 5 Core Leading Indicators of Industry-Leading Health and Safety Programs
 - 22 Toolbox Talks
 - 23 Use of Personal Protective Equipment
 - 24 Planning for Project Health and Safety
 - 25 Health and Safety Program Performance Review
 - 26 Task-specific Health and Safety Process
- 27 Technology Impacting Health and Safety Programs
 - 28 Tracking Leading and Lagging Indicators Using Technology
 - 29 Artificial Intelligence
 - 30 Virtual Reality for Safety Training
- 31 Benchmarking STEP Performance Improvement, 2007-2024
- 32 2024 ABC STEP Diamond Members
- 38 2024 ABC STEP Platinum Members
- 43 Glossary of Terms
- 45 ABC National Health and Safety Committee

Introduction

Every company that works in construction wants to send its workers home in the same condition in which they arrived—if not even better—after an active day of work that stimulates the mind and body. Established in 1989, STEP is a proven system that provides the framework to measure, strengthen and build industry-leading safety programs that enable top-performing ABC members to achieve incident rates nearly six times safer than the U.S. Bureau of Labor Statistics construction industry average.

Until now, relatively few studies have been conducted on the correlation between the use of measures companies can take to keep workers safe on jobsites—leading indicators—and the number of incidents, accidents and injuries that occur—trailing indicators. The empirical evidence did not exist.

Associated Builders and Contractors created the Health and Safety Performance Report to address this issue.

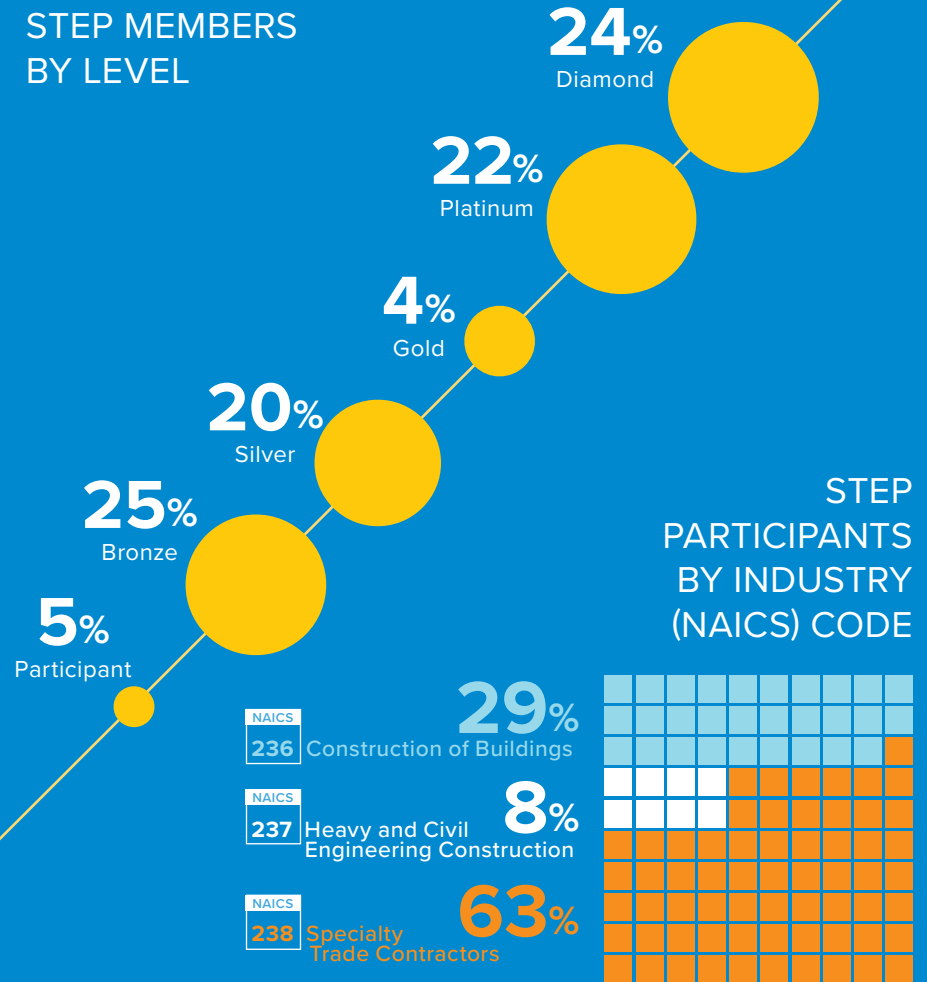
The charts and summaries within this report present the clearest picture to date of the remarkable impact that leading indicator use has on a company’s safety performance: fewer disrupted or lost lives and a safer jobsite regardless of company size. In fact, companies that engage in leading indicator use are, statistically, considerably safer than their peers.

Leading indicator programs work to improve safety performance.

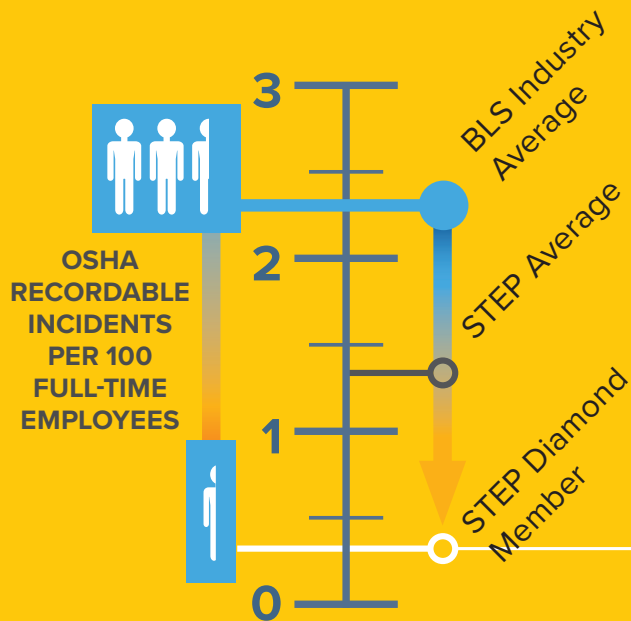
Methodology

The ABC 2025 Health and Safety Performance Report is based on submissions of unique company data gathered from members that deployed STEP in 2024. ABC collects each company's trailing indicator data as reported on its annual Occupational Safety and Health Administration Form 300A ("Summary of Work-Related Injuries and Illnesses") and its STEP self-assessment of leading indicator practices. Each of the data points collected is sorted using statistically valid methodology developed by the U.S. Bureau of Labor Statistics for its annual Occupational Injuries and Illnesses Survey and then combined to produce analyses of STEP member performance against BLS industry average incident rates.

STEP MEMBERS BY LEVEL



ABC TOP-PERFORMING MEMBERS ARE
NEARLY 7 TIMES SAFER THAN THE
CONSTRUCTION INDUSTRY AVERAGE



Total Recordable Incident Rates: STEP vs. the U.S. Bureau of Labor Statistics Industry Average

What If Your Company Could Be Nearly 7 Times Safer Than the Industry Average?

And you could reduce your Total Recordable Incident Rate
by 85%?

It's more than possible. **It's doable.**

The ABC 2025 Health and Safety Performance Report is not a research project or an academic study. Since 2018, it has captured the results of ABC STEP member companies performing real work on real projects. ABC is building on the analysis of more than 1 billion hours of work in 2024 to identify what comprises an industry-leading health and safety program.

85%
REDUCTION
IN TRIR

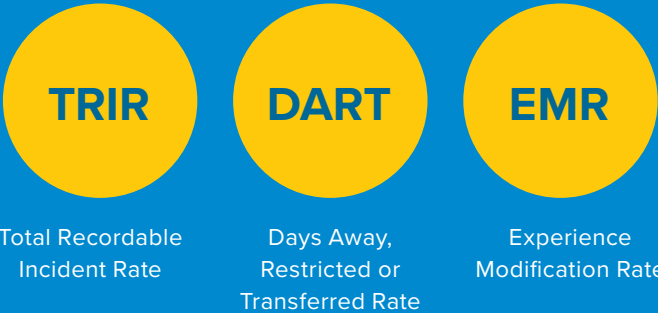
658%
SAFER

Measuring Health and Safety Performance

The construction industry has long evaluated health and safety performance based on trailing indicators—statistics that measure performance based on past incidents or conditions. These statistics judge companies not on the steps taken to prevent jobsite injuries and fatalities, but rather on the number of past safety failures. Trailing indicators only tell part of the story.

Health and safety performance isn't reflected in what you **did**.
It's reflected in what you're **doing**.

TRAILING INDICATORS: OUTPUTS AND RESULTS



LEADING INDICATOR IMPLEMENTATION



TRAILING INDICATOR PERFORMANCE

GOAL: Determine the correlation between **leading** indicator implementation and **trailing** indicator performance.

What's Behind Industry-Leading Health and Safety Performance?

Innovative thinking from contractors, the owner/user community and insurers puts leading indicators under the microscope.

ABC has studied how to improve safety through STEP since 1989.

The 2024 STEP self-assessment is comprised of key components—leading indicators that are proven to improve health and safety performance and the criteria that indicate best practices. Members that deploy STEP score their level of achievement for each component on a weighted scale of 0 points (low score) up to 12 points (high score). Companies receive a recognition level of Diamond, Platinum, Gold, Silver, Bronze or Participant based on their score.

ABC quantified the positive impact of proactive injury and hazard elimination tools on the jobsite using data gathered from STEP participants in construction, heavy construction, civil engineering and specialty trades. Analyzing aggregated data allows ABC to determine how measures taken to prevent incidents actually improve trailing indicator performance.

Key components of an industry-leading safety program.



The ABC Health and Safety Alliance—a prestigious mark of excellence—features members who actively participate in the ABC STEP Health and Safety Management System annually, demonstrate a long-term commitment to health and safety and uphold health and safety as a core company value. Under the ABC Health and Safety Alliance are all of ABC's health and safety programs including STEP, the National Health and Safety Excellence Awards, ABC's Total Human Health initiative and the ABC Health and Safety Leadership Forum.



The STEP Health and Safety Management System provides a time-tested framework to measure, strengthen and build an industry-leading health and safety culture.



Total human health elevates mental health and wellness to the same level of importance as physical safety.



The premier event for visionary C-suite leaders dedicated to transforming their organization's health and safety culture. Designed for forward-thinking executives, this forum enhances your leadership skills, improves your workplace and creates a sustainable, thriving and resilient organization.



Honor members that exhibit a continued commitment to jobsite health and safety and whose health and safety performance and programs are judged to be exemplary by the ABC National Health and Safety Committee. Awards are based on data submitted via the STEP self-assessment, essay questions and video interviews with company presidents/CEOs/principals about their corporate health and safety culture.

Physical wellness promotes proper care of our bodies for optimal health and functioning.

Mental health refers to the cognitive aspect of health.

Intellectual wellness is when you recognize your unique talents.

Financial wellness is a feeling of satisfaction about your financial situation.

Occupational wellness is a sense of satisfaction with your choice of work.

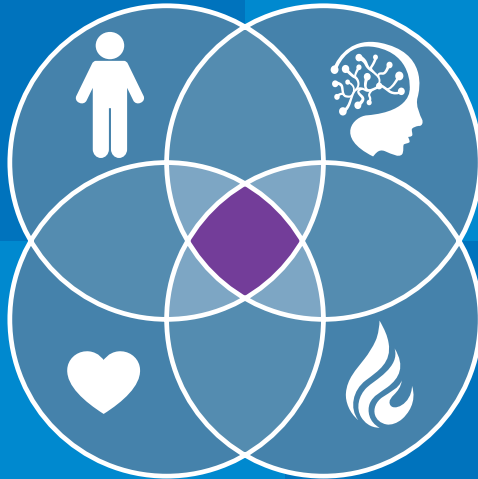


Body

Mind

Heart

Soul



Emotional wellness is an ability to cope effectively with life and build satisfying relationships with others.

Social wellness is a sense of connectedness and belonging.

Spiritual wellness is related to your values and beliefs that help you find meaning and purpose in your life.

ABC added **total human health** as a key component of an effective safety program. Total human health raises the bar for keeping workers safe to acknowledge and address thoughts and preoccupying concerns that everyone experiences in daily life, incorporating:

- **A whole-person approach** to engage a person's body, mind, heart and soul.
- **Psychological safety** that is respectful of the entire workforce.
- **Acknowledgement of the risk of distraction and impairment** and responding with appropriate care.



ABC's total wellness partners offer members three programs that further the goals of total human health.



Corporate Chaplains of America/LEAPCare

Employees of ABC members receive 24/7/365 care for permission-based help in daily life matters and times of crisis.



Blue-U

Blue-U offers everything you need to help secure your employees and company from dangerous threats at work.



Tuned

Tuned is the only comprehensive, virtual hearing benefit available for employees.

ABC Promotes Mental Well-Being

Since 2022, ABC has delivered suicide prevention and awareness education at 47 chapters, training more than 3,000 industry professionals, and hosted free weekly webinars during Suicide Prevention Month in September. The training program helps construction workers understand how to prevent suicide by creating a forum for dialogue and critical thinking about workplace mental health challenges—and developing help-seeking and help-giving skills. ABC counts 78 Mental Health Champions nationwide.

ABC is a founding member of the Construction Industry Alliance for Suicide Prevention.

Total Trainings

187

Total Participants

3,089

abc.org/totalhumanhealth

STEP Improves Health and Safety



STEP is a health and safety management system. Participating ABC member firms measured their health and safety processes and policies on key components in 2024 through a detailed self-assessment with the goal of implementing or enhancing safety programs that reduce jobsite incident rates. Applying industry-leading processes dramatically improves health and safety performance among participants, regardless of company size or type of work.

SafetyReports BY ALIGNOPS

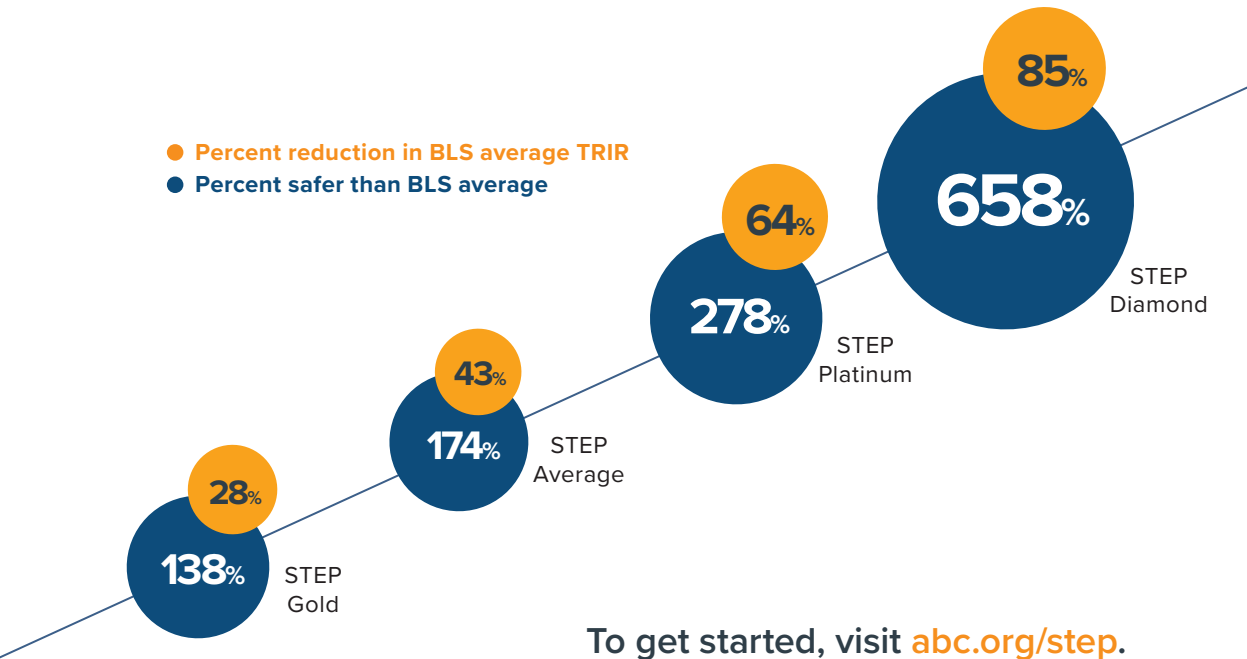
“At SafetyReports, our mission is grounded in supporting the people who build our world. As a trusted safety partner to the construction industry, we’re committed to delivering tools that don’t just check boxes—but truly empower safety leaders in the field. From mobile inspections to real-time analytics, every feature we develop is designed to make jobsites safer, compliance easier and teams more confident that they’ll go home safe at the end of every day.”

l.alignops.com/safety-resources

—Christi Fabela
Director of Product Optimization
SafetyReports by AlignOps



Get Into STEP

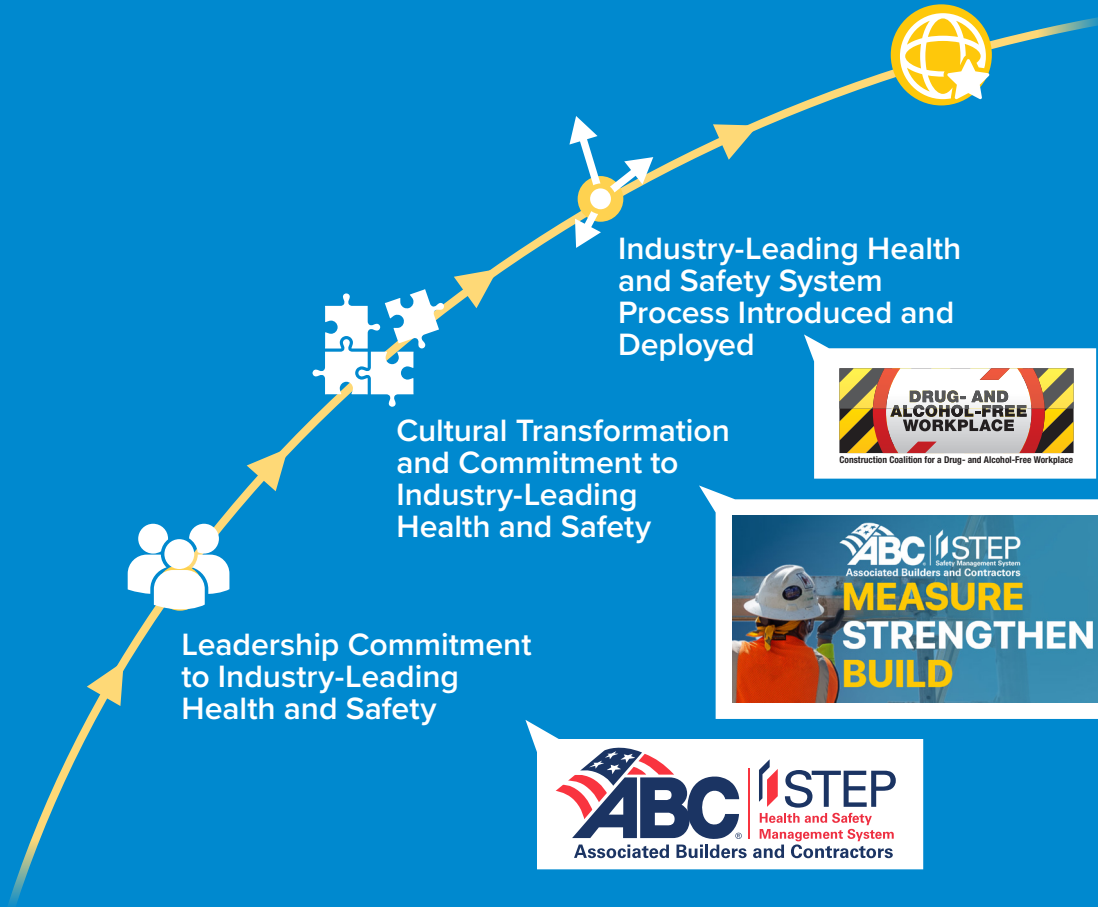


STEP ACHIEVEMENT LEVELS

	Diamond	Platinum	Gold	Silver/Bronze
TRIR at or below 50% of the BLS NAICS code average in each of the previous three data years	●			
TRIR at or below 25% of the BLS NAICS code average for the data year		●		
TRIR at or below BLS NAICS code average for the data year			●	
No lives lost or catastrophic incidents companywide during the application year	●	●		
No lives lost or catastrophic incidents, companywide, during the previous three years resulting in an OSHA citation	●	●		
Minimum key components score	●	●	●	●

To get started, visit abc.org/step.

INDUSTRY-LEADING RESULTS



The Road Map to Industry-Leading Health and Safety

LEADERSHIP is the courage to be out front, challenge the status quo and create a **CULTURE** that is passionate in its belief that all incidents are preventable—a culture where health and safety are considered a moral obligation, not just for leaders, but for all employees. A culture of health and safety cannot exist without leaders taking a stand that includes an unwillingness to compromise health and safety and modeling this belief in every action. **PROCESS** is the intentional, systematic implementation of a health and safety management system that enables a firm to initiate and sustain their journey to industry-leading health and safety. **RESULTS** are the tangible benefits that arise from the consistent implementation of the preceding components.

The Foundations of Industry-Leading Health and Safety

The top-performing STEP members implement these best practices as part of an industry-leading health and safety management system.

NEW HIRE
HEALTH
AND SAFETY
ORIENTATION

SUBSTANCE
ABUSE
PREVENTION
PROGRAMS

FREQUENCY
OF TOOLBOX
TALKS

TOP
MANAGEMENT
ENGAGEMENT

LEADING
INDICATORS

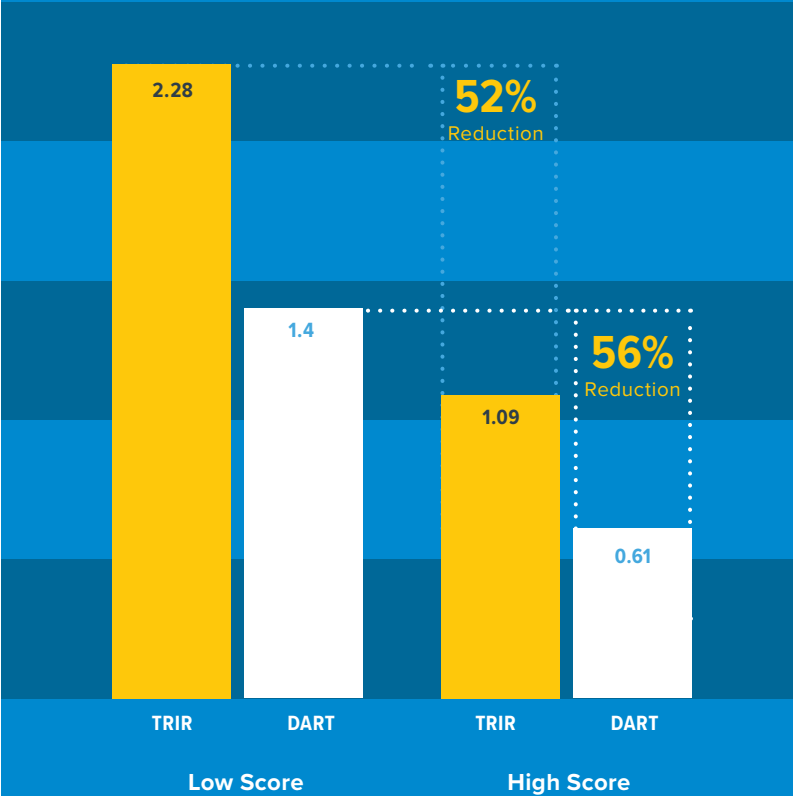
BEST PRACTICES

New Hire Health and Safety Orientation

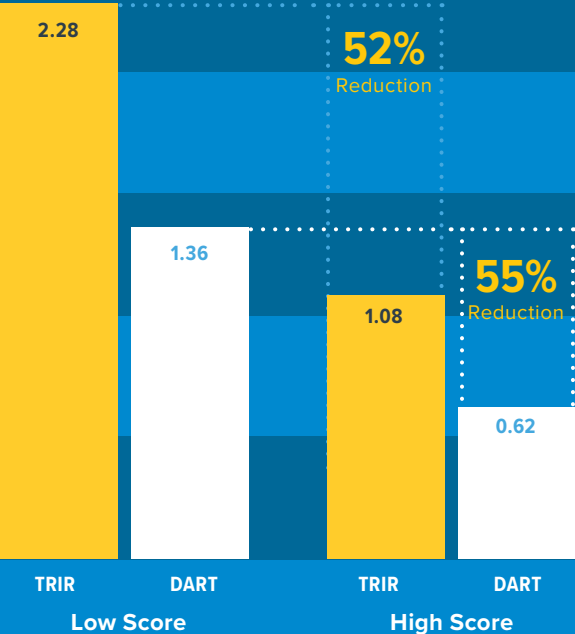
Companies that conduct an in-depth indoctrination of new employees into the health and safety culture, systems and processes based on a documented orientation process experience a 52% reduction in TRIR and a 56% reduction in DART compared to companies that limit their orientations to basic safety and health compliance topics. The CEO or senior leadership delivers that introduction to the company’s health and safety culture and core values, including:



NEW HIRE SAFETY ORIENTATION: LOW SCORE VS. HIGH SCORE



SUBSTANCE ABUSE
PREVENTION PROGRAMS:
LOW SCORE VS. HIGH SCORE



BEST PRACTICES

Substance Abuse
Prevention Programs


One-third of all incidents on construction jobsites are drug- or alcohol-related. Robust substance abuse prevention programs/ policies with provisions for drug and alcohol testing where permitted lead to a 52% reduction in TRIR and a 55% reduction in DART rates. Plus, substance abuse testing can be an effective method of incident prevention if used properly.




ABC is an active member of the Construction Coalition for a Drug- and Alcohol-Free Workplace. Signing the pledge is a STEP requirement. Take the pledge at drugfreeconstruction.org.

SUBSTANCE ABUSE PREVENTION PROGRAMS REDUCE INCIDENTS


Key components include:



A safety policy with strict rules regarding drug and alcohol use, supervisor training, recordkeeping and active enforcement

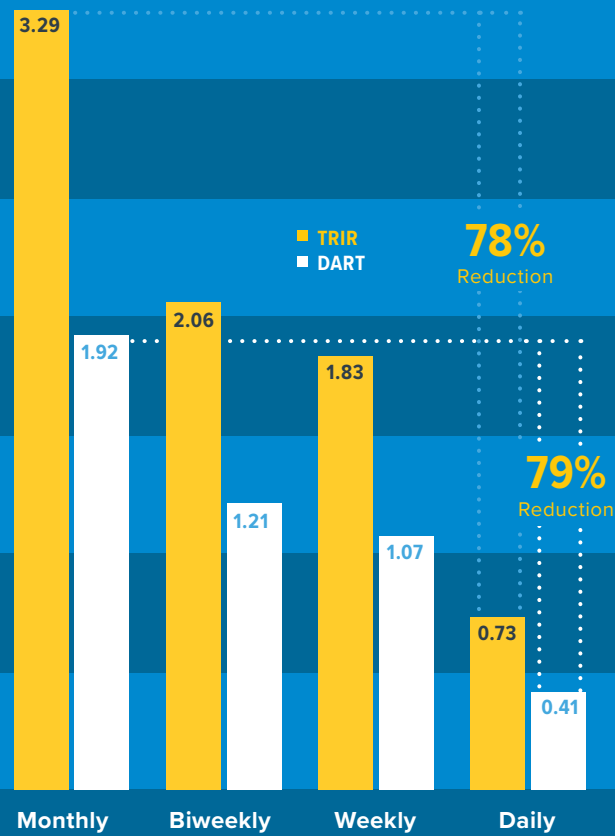


Drug and alcohol testing pre-hire, randomly and with reasonable suspicion



An employee assistance program and available education on substance abuse prevention

FREQUENCY OF TOOLBOX TALKS



BEST PRACTICES

Frequency of Toolbox Talks

Monthly toolbox talks were once the standard, but in recent years, the best practice has shifted to daily sessions that feel more like a continuing conversation than training. Companies that hold toolbox talks daily experience a 78% reduction in TRIR and a 79% reduction in DART rates compared to those that host them monthly.

BEST PRACTICES

Top Management Engagement Matters

Employer involvement at the highest level of company management produces a 49% reduction in TRIR and a 52% reduction in DART rates. In high-scoring ABC STEP member firms, the owner/CEO:

Is a direct and active participant in the health and safety program

Instills personal accountability for health and safety throughout the company

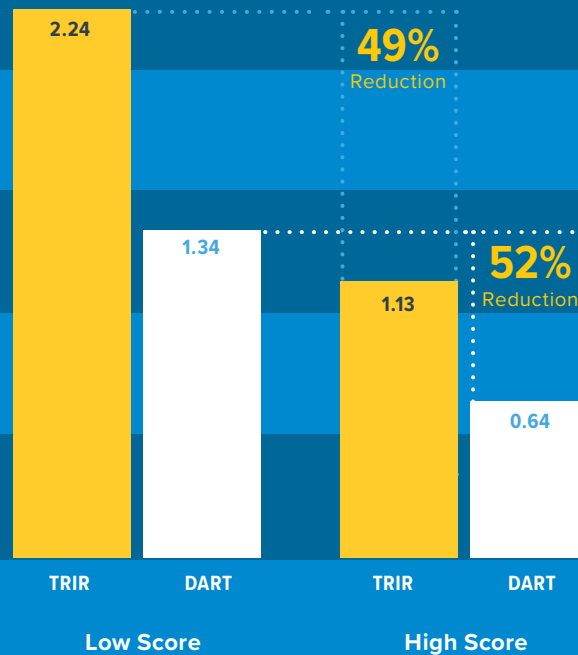
Tracks and annually reviews health and safety goals and objectives

Solicits feedback on the health and safety program and seeks ways to improve it

Commits resources—money, time, personnel, equipment, supplies, etc.

Integrates health and safety into performance appraisals and other company operations

TOP MANAGEMENT ENGAGEMENT: LOW SCORE VS. HIGH SCORE



BEST PRACTICES

Leading Indicators

Tracking and reviewing activities carried out to prevent and control injury, such as safety training, new hire safety orientation and behavior-based safety observations, leads to a 59% reduction in TRIR and a 60% reduction in DART rates.



LEADING INDICATORS: LOW SCORE VS. HIGH SCORE



**TOOLBOX
TALKS**

**USE OF
PERSONAL
PROTECTIVE
EQUIPMENT**

**PLANNING
FOR PROJECT
HEALTH AND
SAFETY**

**HEALTH
AND SAFETY
PROGRAM
PERFORMANCE
REVIEW**

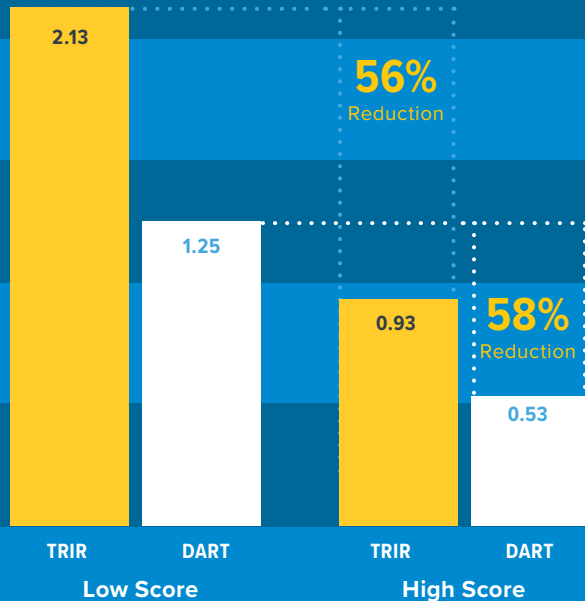
**TASK-SPECIFIC
HEALTH AND
SAFETY PROCESS**

5 Core Leading Indicators

A leading indicator is a system or process used to identify hazards and eliminate or minimize the condition to prevent injury.

This report focuses on five core leading indicators that have the most dramatic impact on health and safety performance.

TOOLBOX TALKS: LOW SCORE VS. HIGH SCORE



BEST PRACTICES

Toolbox Talks

Toolbox talks are short, focused discussions conducted on the jobsite to raise awareness about specific safety issues. By creating space for open dialogue and real-time learning, toolbox talks empower workers to recognize hazards, take ownership of safety practices and contribute to a more accountable, injury-free work environment. Companies that follow best practices for toolbox talks experience an average reduction in TRIR by 56% and DART rate by 58%.

Daily, 15-30-minute toolbox talks are relevant to current jobsite tasks, conditions or recent incidents.

Employees routinely lead the talks with top leaders regularly participating.

Visual aids or real-life examples are used to enhance understanding.

Questions and open discussion are encouraged to engage workers, and attendance is documented.



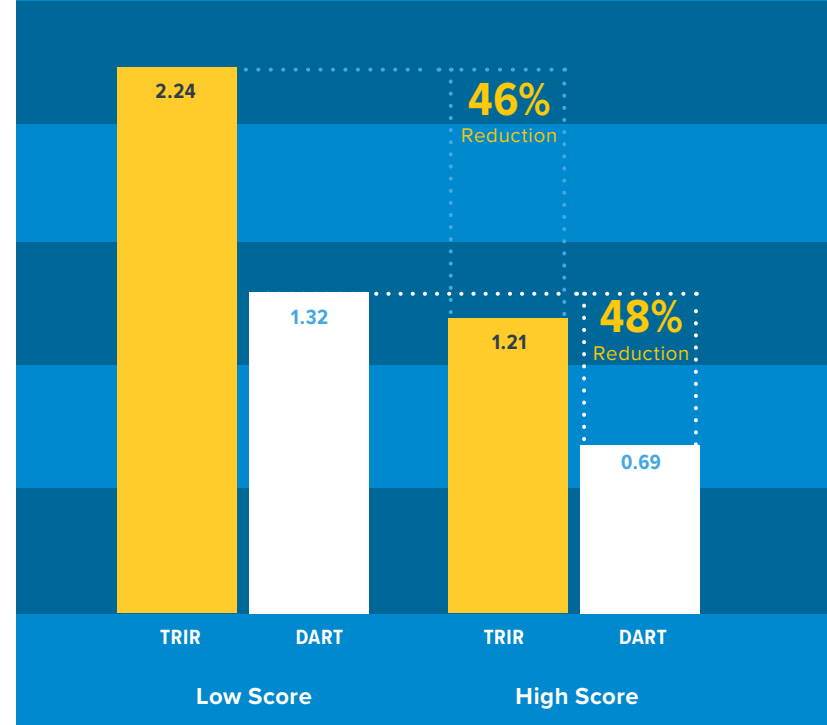
CORE LEADING INDICATORS

Use of Personal Protective Equipment

Having a written PPE policy that is consistently and universally enforced, conducting an annual needs assessment and continually investing in new equipment leads to a 46% reduction in TRIR and a 48% reduction in DART rates.



PERSONAL PROTECTIVE EQUIPMENT (PPE): LOW SCORE VS. HIGH SCORE



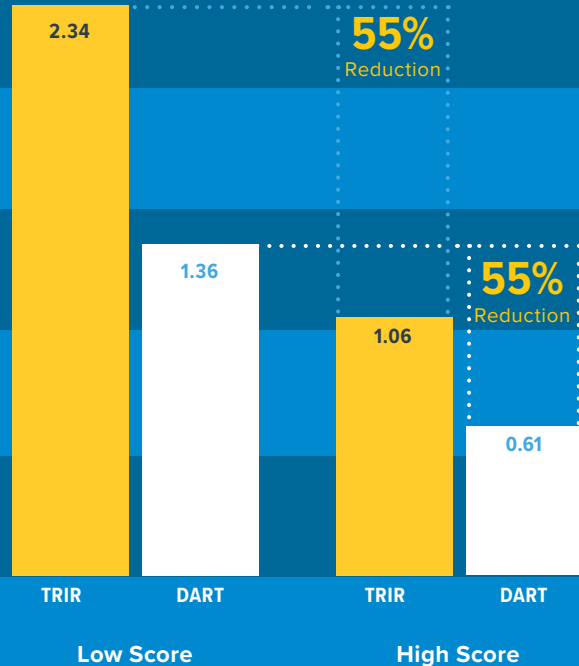
PLANNING FOR PROJECT HEALTH AND SAFETY: LOW SCORE VS. HIGH SCORE



CORE LEADING INDICATORS

Planning for Project Health and Safety

Educating project supervisors and other key personnel in pre-planning for project safety reduces TRIR and DART rates by 55%.



Project safety pre-planning is integrated into the estimate, bid, mobilization and demobilization stages of projects

A checklist ensures a consistent and comprehensive approach to exposure evaluation and resource needs

Project safety plans are regularly updated throughout the life of project

Key components of the pre-plan are communicated to all site employees (including specialty contractors) before implementation



CORE LEADING INDICATORS

Health and Safety Program Performance Review

A biannual review of health and safety program performance by executive leadership that evaluates whether the program is producing expected results and identifies opportunities for improvement leads to a 54% reduction in TRIR and 57% reduction in DART rates:

Safety performance is measured against defined criteria (incident rates, survey results, etc.)

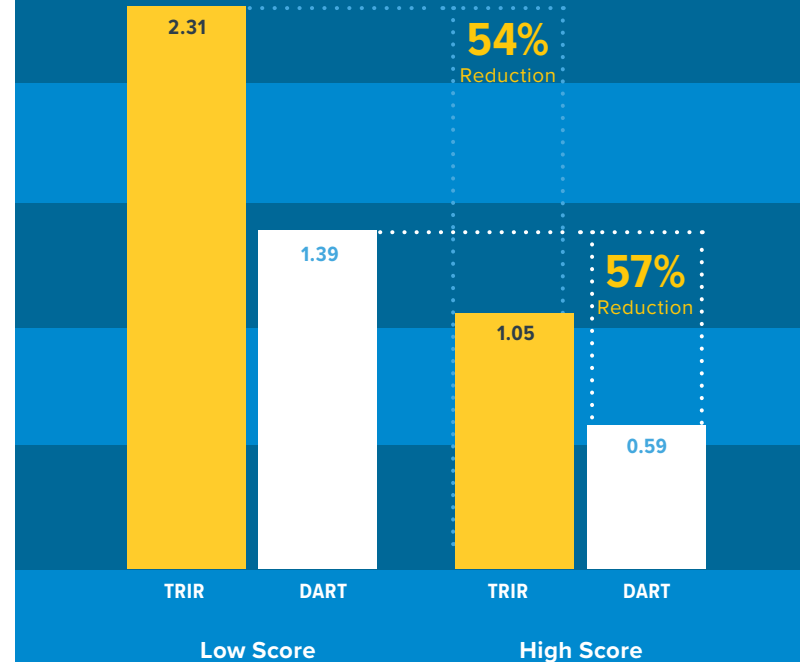
Opportunities for improvement are identified

Results affect safety staff and supervisor performance evaluations

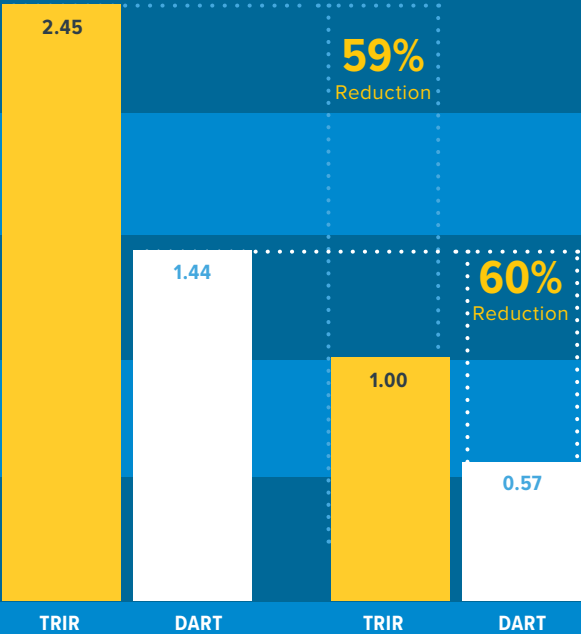
Results and expectations are discussed with safety staff and supervisors

Find the safety app that
is right for your team at
abc.org/techmarketplace.

HEALTH AND SAFETY PROGRAM PERFORMANCE REVIEW: LOW SCORE VS. HIGH SCORE



TASK-SPECIFIC HEALTH AND
SAFETY PROCESS: LOW SCORE
VS. HIGH SCORE



Low Score High Score



CORE LEADING INDICATORS

Task-Specific Health and Safety Process

Establishing a process to define the scope of work, analyze hazards, develop and implement hazard control methods, perform the work within established controls, as well as provide feedback and continuous improvement, leads to a 59% reduction in TRIR and a 60% reduction in DART rates.



**TRACKING
LEADING AND
LAGGING
INDICATORS
USING
TECHNOLOGY**

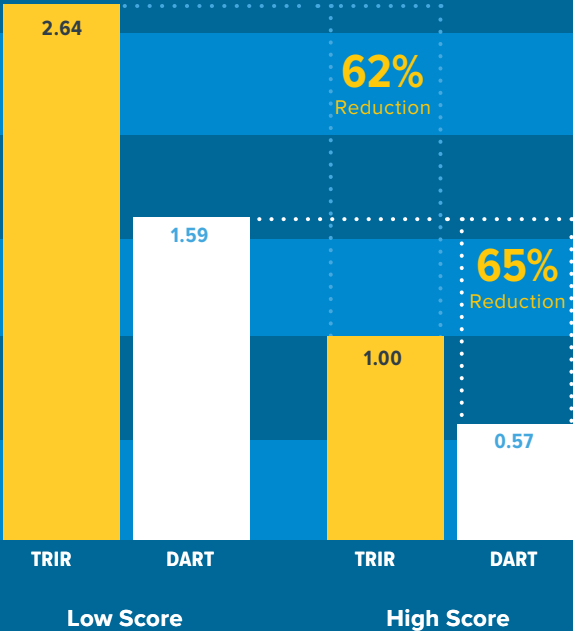
**ARTIFICIAL
INTELLIGENCE**

**VIRTUAL
REALITY
FOR SAFETY
TRAINING**

Technology Impacting Health and Safety Programs

The integration of safety technologies in construction has transformed safety management programs, prioritizing worker well-being through innovation and data-driven insights. Safety technology is reshaping the industry's standards for operational excellence.

TRACKING LEADING AND LAGGING INDICATORS USING TECHNOLOGY



SAFETY TECHNOLOGY TRENDS

Tracking Leading and Lagging Indicators Using Technology

Tracking both leading and lagging indicators produces a 62% reduction in TRIR and a 65% reduction in DART rates compared to those not tracking.



Note: Similar language pertaining to leading indicators only is found on page 20.

SAFETY TECHNOLOGY TRENDS

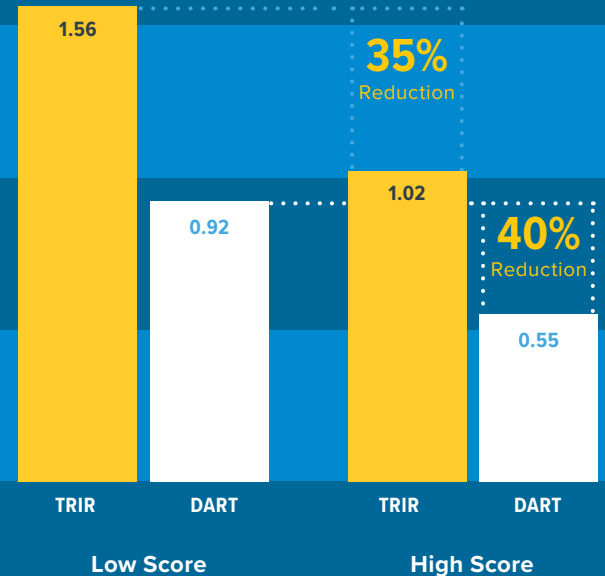
Artificial Intelligence

Contractor members planning to deploy AI in their health and safety programs experience an average reduction of 35% in TRIR and 40% in DART rates. Data reflects companies planning to deploy artificial intelligence in their health and safety programs within the next year.

Enhancing real-time monitoring through tools like computer vision can improve hazard detection and response times on jobsites.

AI can personalize safety training by analyzing individual worker behavior and tailoring content to address specific risks.

ARTIFICIAL INTELLIGENCE

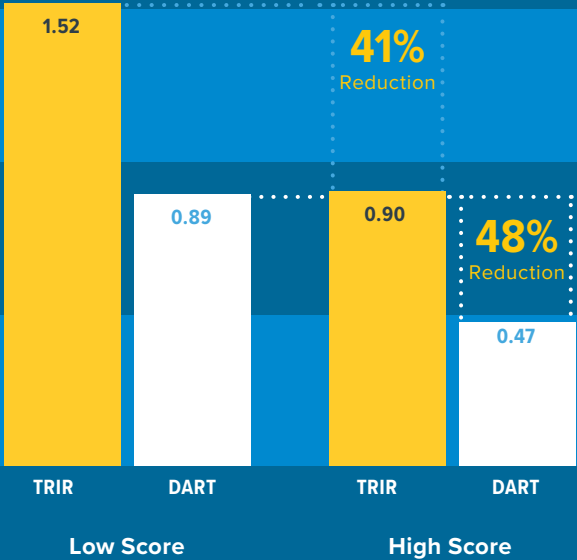


VIRTUAL REALITY FOR SAFETY TRAINING

SAFETY TECHNOLOGY TRENDS

Virtual Reality for Safety Training

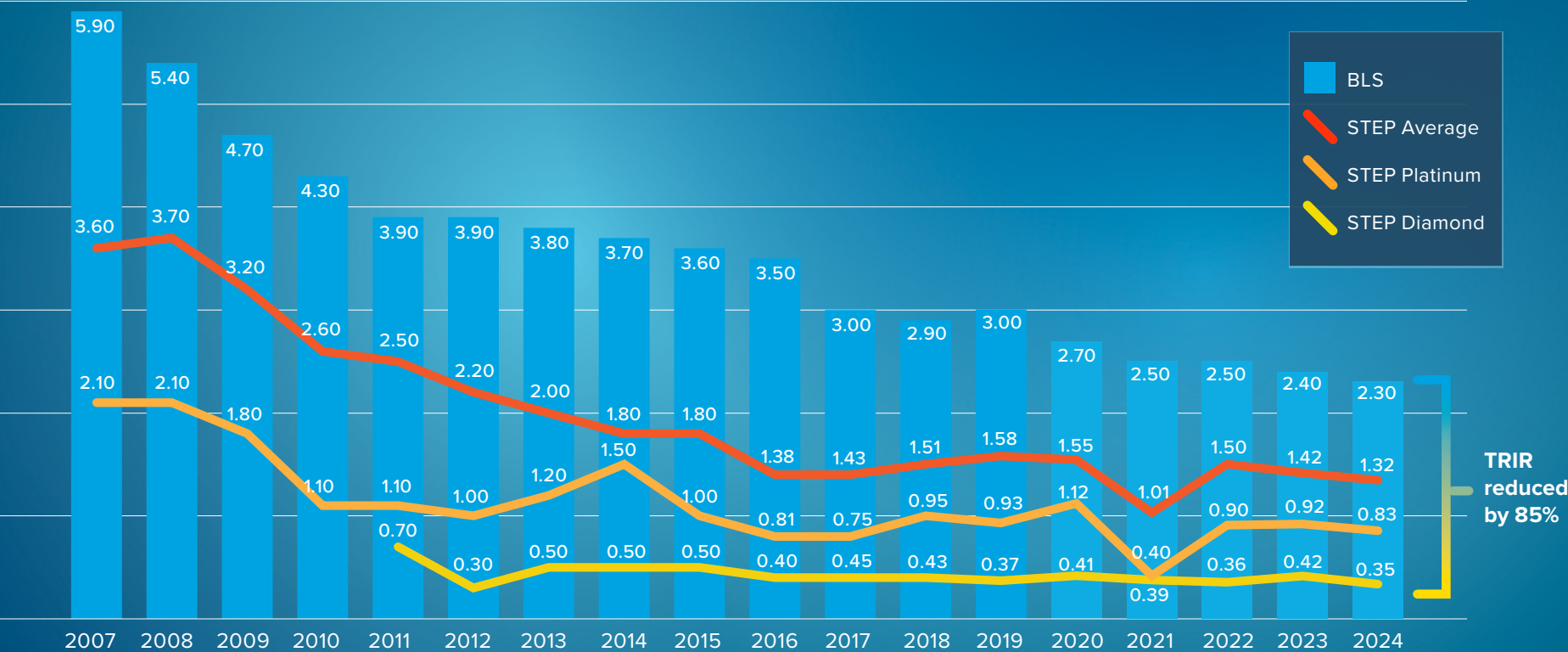
Contractor members planning to deploy VR in their health and safety training program experience an average 41% reduction in TRIR and a 48% reduction in DART rates. Data reflects companies planning to deploy virtual reality in their health and safety training program.



VR can add value to a health and safety training program by immersing workers in realistic, high-risk scenarios without actual danger, enhancing learning and retention.

VR can also allow trainees to improve reactions to hazards in a controlled environment while boosting confidence and preparedness on a real-world jobsite.

BENCHMARKING STEP MEMBER SAFETY PERFORMANCE, 2007-2024



Total Recordable Incident Rates: STEP vs. the U.S. Bureau of Labor Statistics Construction Industry Average

ABC STEP DIAMOND MEMBERS

3S Team, LLC
 A M King
 A.J. Trunzo, Inc.
 A.R. Marani, Inc.
 AB Contracting, LLC
 ACM Services, Inc.
 Acousti Engineering ●
 Action Concrete Cutting, LLC
 Active Environmental Technologies, Inc.
 Activu Corporation
 Adolfson & Peterson, Inc.
 Advance Builders Inc.
 Advanced Electronic Solutions, Inc.
 Advanced Millwork, Inc.
 AEC Site Solutions
 AECOM Hunt
 AFP Systems, Inc.
 Aggregate Technologies Inc.
 Air Dynamics HVAC
 AJ Flooring
 Al J. Mueller Construction Co.
 Alarm & Communication Technologies, Inc.
 Albu & Associates, Inc.
 Allan Myers
 Alliance Electric, Inc.
 Alliance Electrical Contractors, Inc.
 Alliance Industrial Group, LLC
 Alloy Construction Service, Inc. ●
 Alston Construction Co Inc
 ALU Tech LLC
 American Fire Systems, Inc.
 American Structural Concrete
 AnchorBuilt, Inc.
 AnderCorp
 Annapolis Exteriors, Inc.
 Anthony Excavating & Demolition, Inc.
 Apache Electrical Contractors, Inc.
 Apache Industrial Services ●
 APC Construction, LLC ●

Aram Electric, Inc.
 Arboreal Edge LLC
 Arcosa Stabilized & Recycling
 Ardent Services, LLC ●
 Aresh Construction Corp.
 Arkel Constructors, Inc.
 ASCO Power Technologies, L.P.
 Asset Contracting LLC
 AST Formliners LLC
 Atlantic Air Enterprises Inc.
 Atlantic Constructors, Inc.
 Atlas Demolition ●
 Atlas Electrical Construction
 ATT Sports Inc.
 Austin Commercial, LP
 Austin Industrial, Inc.
 AXIOS Industrial Group ●
 Axthelm Construction, Inc.
 Azevedo Plumbing
 Baker Concrete Construction, Inc. ●
 Baker Gulf Coast Industrial
 BakerTriangle
 Balancing Service Co.
 Balfour Beatty ●
 Bancroft Construction Company
 Bar-A Construction, Inc.
 Barriere Construction, A CRH Company
 Batten I Shaw Construction
 Bauer Design Build, LLC
 Bayou City Industrial Contractors, Ltd
 Bayside Fire ●
 Bazon-Cox & Associates, Inc.
 Bear General Contractors
 Beard Construction Group, LLC
 Bell Enterprises Maintenance Service
 Bengal Crane & Rigging ●
 BETCO Scaffolds ●
 Betts Environmental Services Corp.
 Biggs Construction Co., Inc.

Bildisco MFG Inc.
 BL Harbert International
 Black Construction Corporation
 Blackline ●
 Bladholm Construction
 BLOCK Companies, LLC
 Blue Cord Design & Construction, LLC
 Blue Mountain Mechanical, Inc. ●
 Bluewater Constructors, Inc.
 Bobbitt Construction
 Boh Bros. Construction Co., LLC
 Bordeaux Construction Company, Inc.
 Bowdoin Construction Corporation
 Brasmerica Construction, LLC ●
 Brawco, Inc.
 BRCO Constructors, Inc.
 Brennan Construction of MN, Inc.
 Breslin Contracting, Inc. ●
 Brewer Construction Services, LLC
 BrightFields, Inc.
 BrightView Landscape Development, Inc.
 Brindley Construction, LLC
 Broad Construction, Inc.
 Bronco Industrial Services, LLC ●
 Brothers Mechanical, Inc. ●
 Brown & Root Industrial Services, LLC
 Brown's Construction Service, Inc.
 Bryan Builders, LLC
 Brycon Corporation
 Bryson Constructors, Inc.
 Building Construction Associates, Inc.
 Burns & McDonnell
 Burrow Global Services, LLC ●
 Butler-Cohen LLC
 BW Kennedy & Co., LLC
 C. Raymond Davis & Sons, Inc.
 C.C. Owen Tile Company, Inc.
 C3 Construction Services, LLC
 Caddell Construction Co. (DE), LLC ●

Cadence McShane Construction Co. LLC
 Cajun Industries, LLC
 Calray Electric, Inc.
 Camarata Masonry Systems, LTD
 Cannon Government Solutions, LLC
 Capela Construction Inc.
 Capital Interior Contractors, Inc.
 Carden Co., Inc. ●
 Carlton Construction
 Carr's Construction Service, Inc.
 Carter Group, LLC ●
 Casey Construction Group, LLC
 Catalyst Construction Services LLC ●
 CBG Building Company
 CCC Group, Inc.
 CD Barnes Construction
 Cedar Lane, LLC ●
 Cely Construction Co.
 Central Builders, Inc.
 Central Concrete Products ●
 Central Florida Waterproofing, Inc.
 Central Indiana Insulation LLC
 Centrica Business Solutions
 CF Evans Construction ●
 Challenger Fence Inc
 Challenger Sheet Metal
 Chamberlin Roofing & Waterproofing ●
 Charleys Painting, LLC ●
 Chemex Global, Inc.
 Childers Roofing and Sheetmetal ●
 Chris Woods Construction Co Inc
 CIANBRO
 Civil Werx
 CK Commercial
 Clutch Concrete LLC
 CMC, Inc.
 CMS Corporation ●
 CNC Glass & Storefronts, LLC
 Coastal Construction of Tampa, LLC ●

Coates Electrical & Instrumentation Inc.
 Codaray Construction, LLC ●
 Colburn Electric
 Coletta Contracting Co., Inc.
 Collins Plumbing, Inc
 ColonialWebb Contractors
 Comfort Systems of Virginia, Inc.
 Comfort Systems USA Southeast
 Comfort Systems USA-Mid South ●
 Commercial Millworks Inc. ●
 Competitive Edge Partners & Consulting, LLC ●
 Conductor Power, LLC
 Connor Construction, LLC ●
 Constructable
 Contech Control Services
 Contractor Service & Fabrication
 Cook Brothers, Inc. ●
 Cornell Plumbing & Heating, Inc.
 Corpro Companies, Inc.
 Corvus Construction
 County Group Companies
 CP Rankin, Inc., Roof Management & Contracting
 Craig & Heidt, Inc. ●
 Crain Group, L.L.C.
 Crescent Communities Construction, LLC
 Crisafulli Mechanical LLC
 Crossland Construction Co., Inc.
 Crossroads Mechanical, Inc. ●
 CRRizzo Construction LLC ●
 CSM Group ●
 Cubic Wall Systems, Inc.
 Current Electrical Contracting
 CW & Sons Infrastructure, Inc.
 D & E Window and Door, LLC
 D & K Electric, Inc.
 D. Wilson Construction Company
 D.L. Payne Inc.
 D.R.B. Electric, Inc.
 D'Avellino Construction, Inc.

Dacon Corporation
 DarkHorse Industries, LLC
 DAVCON, Inc. ●
 DaVeer Electrical & Mechanical Contracting, Inc.
 Davis Mechanical Systems ●
 Dawn Incorporated
 DC Energy, Inc.
 DC Solar, Inc. ●
 dcb Construction Company, Inc.
 Dean West Construction, Inc.
 Debyrons Construction Corp
 DECCO, Inc.
 Delmarva Veteran Builders
 DeLotto
 Derman Associates
 DIA General Construction, Inc
 Diamond Care Core Drilling, LLC
 Diamond Concrete Sawing ●
 DiMarco Constructors, LLC
 DiMeglio Construction Co., Inc.
 Diversified Power Corporation ●
 DLS, LLC
 Doggett Machinery Services
 Domack Restoration, LLC
 DonahueFavret Contractors, Incorporated
 Dooleymack Constructors of GA, Inc.
 DooleyMack Constructors of SC, LLC
 DRP Builders, Inc.
 DS Constructors, LLC ●
 Dubak Electrical Group
 Ducks Roofing Co., Inc. ●
 Ducts Unlimited, Inc.
 Dunhill Development and Construction ●
 Dunn Services, Inc.
 Durham Construction Company, Inc.
 Dynamic Fan
 Dynamic HVAC, LLC. ●
 Dynamic Site Redevelopment LLC
 E. Cornell Malone Corp.

E.E. Reed Construction, L. P.
 EA Services Corp
 Eagle Associates of Cazenovia, LLC
 Early Services, Inc. ●
 Eastern Applicators, Inc. (DBA Safe and Sound Poured Floors) ●
 Eastern Coast Construction
 Eastern Industrial Services, Inc.
 Eastern Power Electric, LLC
 EBCO General Contractor Ltd ●
 ECI Construction Services
 Ecuadesign, Corp
 EDiS Company
 Edwards Electric Service, LLC ●
 Electrical Energy Systems Corp.
 Elite Climate Control
 Ellison Construction ●
 Ellsworth Builders, Inc.
 Elmstar Electric Corporation
 Emerald Standard Services, Inc.
 Encon Mechanical ●
 ENTEK Corporation
 Enterprise Commercial Paving, Inc.
 Enterprise Electrical
 Environmental Assurance Co., Inc. ●
 EPI Power, LLC
 Ernest. P. Breaux Electrical ●
 Escon Builders
 ESI Group USA dba ESI Constructors, Inc.
 Etolin Strait Development Group, LLC
 Excel Communications Worldwide, Inc.
 EXCEL Group ●
 Fabricated Pipe, Inc.
 Facility Services USA, LLC
 Faith Technologies Incorporated
 Farrell Roofing, Inc. ●
 Fast Track Specialties, LP
 Fatboy Electric, Inc
 Ferraro Construction Corporation ●
 Fine Cut Drilling and Sawing, LLC

Finishing Touch Commercial Cleaning, LLC
 First Companies, Inc.
 Fisher Contracting Co. ●
 FitzGerald & Sons Plumbing Company
 Five Oak Construction
 Five-S Group
 Flintco, LLC ●
 FlorWright, Inc.
 Fogel-Anderson Construction Co.
 Forrester Construction
 Fortune-Johnson
 FOS Electric, Inc.
 Frampton Construction
 Frank Zotynia & Son, Inc.
 Franken Construction Company
 Fred Adams Paving Company, Incorporated
 Fredericks, Inc. Contractors
 Fureigh Heavy Construction
 G Technology, Inc.
 G Zitone Excavating LLC ●
 G.E. Insulation Co.
 Gainesville Mechanical, Inc.
 Gardiner & Gardiner | BGC
 Garrett Contracting, LLC ●
 Gary R Banks Industrial Group
 Gatch Electrical Contractors, Incorporated ●
 Gaylor Electric, Inc. ●
 GCCI, Inc.
 Gems Environmental Management Services, Inc.
 Georgia Technology Systems ●
 Get Lit Electrical and Plumbing ●
 Get Volts
 GF Masonry, LLC
 GFP Cement Contractors LLC
 GGA Construction ●
 Gibbs Construction, LLC ●
 Gilbane Building Company
 Glacier HVAC/R LLC ●
 GLB Concrete Construction, Inc.

STEP DIAMOND MEMBERS (cont.)

Global Ace Construction
Global Construction Solutions, Inc.
Global Urban Enterprises LLC.
GMF Steel Group
GMI
Gomez Construction Company ●
Gordon Construction
Gordon H. Bayer, Inc.
GovSolutions, Inc. ●
Graham Roofing, Inc.
Granite Petroleum, Inc. ●
Gray Construction
Graycor ●
Great Lakes Bay Construction ●
Greater Georgia Concrete, LLC
Greco Structures
Griesenbeck Architectural Products, Inc. ●
Ground/Water Treatment & Technology, LLC
GROUP Contractors, LLC ●
Groveland Construction, LLC
GTEC ●
Guerra Bros. Plumbing, Inc. ●
Gulfspan Industrial ●
H&K Services, Inc.
H&W Nor-Cal Builders ●
Haley-Greer, Inc.
Halme Builders, Inc. ●
Halyard ●
Harbor Roofing and Waterproofing Inc.
Harkins Builders, Inc.
Hartley-Waltz Construction LLC ●
Harvey Builders
Harvey Cleary Builders
Haskell
Hawaiian Rock Products ●
Haynes Construction Co.
Hayward Electric Company
Hazmat Diagnostic LLC
HB Construction
HDCC Guam, LLC

Heartland Construction, Inc
Hedrick Brothers Construction Co. Inc. ●
Helix Electric ●
Hendrick Construction, Incorporated ●
Henley Construction Co., Inc.
Henry Miller Mechanical ●
Heritage Industrial Services, Inc.
HESS Construction
HHJ, Inc.
High Construction Company
High Country Contractors & Developers
Hillard Electric
HITT Contracting Inc.
HM Company LLC
Hoar Construction, LLC
Holes Golden Triangle, LLC ●
Holes Inc.
Holes South Texas, LLC
Howard Shockey & Sons, Inc.
HR Plumbing
HRIC MD, Inc.
I Take It LLC
I.E. - Pacific, Inc. ●
I&I Soft Craft Solutions ●
IAN Construction Corporation
ICON Integrated Mechanical Solutions
ICS Inc
ICT - Infiniti Communications Technologies
liCON Construction Colorado, LLC ●
Imperial Flooring Systems Inc.
Imperial Surveillance ●
In-Line Architectural Glass & Metal
Incorporated
Independent Roofing Systems, Inc.
Innovational Construction & Design, Inc.
Innovative Performance Construction Co., LLC
Insulation Contractor Services ●
Integrated Building Solutions ●
Integrated Scaffolding Concepts, LLC ●
Integrated Security Systems, Inc.

Intercontinental Construction Contracting, Inc.
International Cooling Tower USA, Inc.
Interstate Electrical Contractors, Inc.
Ironsmith Fire, LLC
ISC Constructors, LLC
ISG (Infrastructure Solutions Group)
ISO Services
Ivey Mechanical – IMC Fab ●
J & J Fire Protection Company, Inc.
J and D Trucking, Inc.
J Feldkamp Design Build
J W Elmer Construction Company
J. C. Driskill, Inc.
J. D. James, Inc. D/B/A Nature Bridges ●
J. Vinton Schafer, A Quandel Company
J.J. Hauser & Sons
J.J. Sinisi, Inc.
J.R. Contracting & Environmental Consulting,
Inc.
J.S. Goray, Inc.
J.W. & Sons, Inc.
James A. Edgar Company, Inc.
James B. Donaghey, Inc.
JE Dunn Construction Company
Jeff Luchetti Construction, Inc.
Jerrell's Landscapes & Nurseries Inc.
JK2 Construction
JL Builders, Inc.
Joeris General Contractors, Ltd. ●
Johnson Waterproofing Company
Jola Site Contractors LLC
Joseph J. Magnolia, Inc.
Joslin Construction Texas, LLC
JPB Designs, Inc.
JRC Mechanical, LLC
JSThree LLC
JT Thorpe Industrial, Inc.
Juneau Construction Company ●
JVS Industrial & Commercial Contractors, Inc.
JZA Enterprises, LLC

K & T Construction Co., Inc.
K.D. Steel ,Inc.
Karsten Interior Services ●
KBE Building Corporation ●
KCG Industrial
Keeley Construction Group
Kelley Construction, Inc.
Kenny Electric
KERCO, Inc.
Kilgore TEC Products, Inc.
Kirlin Way Mechanical
Kohl Electrical Services
Koontz Electric Co., Inc.
Kortman Electric, Inc.
KPost Company
Kraemer Industrial Services
KT Builder
Kuehl Electric, Inc.
Kwest Group, LLC ●
LaGasse Construction Inc.
Lakeside Project Solutions, LLC
LaRosa Building Group, LLC
Larson Building, Inc.
Lasco Acoustics & Drywall, Inc.
Lauger Companies, Inc.
LDKerns Contractors, Inc. ●
LeChase Construction Services, LLC
LEMOINE
Lester Contracting, Inc.
LEW Site Construction LLC
Limestone Building Group
Lithko Contracting, LLC
Lockwood Remediation Technologies LLC
LoDuca Associates Inc.
Longo Electrical Mechanical Inc.
Lotspeich Co. of Florida, Inc. ●
Lott Brothers Construction Company ●
Loughridge & Company, LLC
LOYAL Waterproofing Construction, Inc.
LPR Construction Co.

Luck Brothers, Inc.
 LynxSystems, LLC
 Lyon Contracting, Inc.
 M. Davis & Sons, Inc.
 M. J. Harris Construction Services
 M.C. Dean, Inc.
 M.O., Inc. ●
 Macallan Construction, LLC ●
 MacKenzie Contracting Company, LLC
 Macri Associates, Inc.
 Maddox Group, Inc.
 Magic Touch Construction Co., Inc.
 Manhattan Mechanical Services, LLC
 MAPP, LLC
 Marcus Construction
 MAREK ●
 Mark Cardinal Concrete Construction, Inc. ●
 Mark Turner Construction, LLC
 Marksmen General Contractors
 Marquis Industrial Services Inc ●
 Marshall Welding & Fabrication
 Mason Construction LLC
 Master Interiors, Inc.
 Master's Plumbing, Heating & HVAC, LLC
 McCarthy Building Companies, Inc.
 McCrory Construction, LLC
 McElvany, Inc. ●
 McFarland Construction
 MDI, Inc. General Contractors
 Mechanical Air Systems Company
 Messer Construction Company
 Metcon Incorporated
 MetroPower, Inc. ●
 MGM Construction Group
 Midstate Site Development, LLC
 MIG GOV, LLC
 Mike Flynn Painting Old & New, Inc.
 Milender White Construction Co.
 Miles Roofing, Inc.
 Milestone Metals
 Millennium Industrial Corporation

Miller-Tippens Construction Co., LLC
 Miller-Valentine Construction
 Mindak Commercial Construction ●
 MK Marlow Company, LLC
 MMR Constructors, Inc.
 Mobil Steel International, Inc.
 Modern Mechanical Systems, Inc. ●
 Moltus Building Group
 Moore Industries, LLC
 More Consulting Corp
 Morris Builders, LLC
 Morris-Shea Bridge Co., Inc.
 Moss
 Mountain Restoration & Protection, Inc.
 Mountain States Fence Co.
 Multiservice, LLC ●
 Murray Construction
 N8 Excavation
 NATCON Group, Inc
 National Coatings
 National Design Build Services, LLC
 Nauset Construction Corporation
 Njirich & Sons, Inc.
 Noble Sheet Metal
 Noble Texas Builders
 Norrell Construction, Inc.
 North East Fire Protection Systems, Inc.
 North Point Builders of Maryland, LLC ●
 Northside Steel Fabricators, LLC
 Northstar CG, LP
 Northstar Marine Inc.
 NV2A Group, LLC
 Nyce Construction Services
 O'Malley Electric, LLC
 O'Neal, Incorporated
 O'Rourke Wrecking Company
 O&G Rocks
 OCE Mechanical
 Ocean Construction Services, Inc. ●
 Ocean Drywall, Inc.
 OK Construction and Contracting, LLC

Olaf Anderson Construction, Inc.
 Old Dominion Abatement & Demolition, LLC ●
 Old Dominion Firestopping, LLC ●
 Old Dominion Insulation, Inc.
 Omega Foundation Services
 On-Line Contracting Inc.
 On-Site Security LLC
 Osiyo, Inc. ●
 Ovation Construction Company
 Oxentenko, Inc.
 P & A Roofing & Sheet Metal, Inc. ●
 Pacific Rim Constructors, Inc. ●
 Pacific West Controls, Inc.
 Paradigm Mechanical Corp
 Paramount Construction Group, LLC
 Pat Hall Construction Inc
 Patriot Construction & Industrial, LLC
 Paul C. Scott & Sons Plumbing, Inc.
 PCC Construction Components, Inc.
 PCE Constructors, Inc.
 PCL Industrial Construction Co.
 Peak Cranes LLC ●
 Pennsylvania Mechanical Systems Company
 (PAMSCO)
 Penntex Construction Co, Inc
 Percopo Coatings Company, LLC
 Performance Contractors, Inc.
 Pest Solutions, Inc.
 Petrie Construction LLC
 Pfister Energy, Inc ●
 Phoenix HVAC
 Piccirilli Mechanical Inc.
 Picou Brothers Construction Co., LLC
 Pinkerton & Laws
 Pioneer Roofing, A Tecta America Company,
 LLC
 Pipe and Steel Industrial Fabricators, Inc.
 Pirtle Construction Company
 Pivotal Construction
 Polk Mechanical, LLC
 Precision Striping & Sealcoating, Inc

Preferred Capitol Cleaning, LLC
 Premier Construction Services LLC ●
 Press Mechanical Contractors, Inc
 Primoris Services Corporation - Civil Division
 Proctor Mechanical ●
 Prodigy Builders LLC
 Progressive Fence and Landscape Innovations
 LLC
 Progressive Pipeline Management, LLC
 Protective Measures Security and Fire Systems
 Pyramid Electric, Inc.
 QA Construction Service, Inc
 Quandel Enterprises, LLC ●
 R & R Coatings, Inc.
 R A Glancy & Sons, Inc.
 R J Berry Jr., Inc.
 R. C. Stevens Construction Company ●
 R.S. Widdoes & Son, Inc. ●
 RA-LIN and Associates, Inc.
 Racanelli Construction
 Rain King, Inc.
 Rak Plumbing and Heating, LLC
 Ralph G. Degli Obizzi & Sons
 RCL Construction Co., Inc.
 Re-Site ●
 Regal Construction, LLC
 Reliable Commercial Construction ●
 RES Contractors, LLC
 REW Corporation
 Ribeiro Stones, LLC
 Richards Corporation
 RIGID Constructors, LLC
 RK Industries, LLC
 RMGS Enterprises Inc.
 RNGD
 Ro's Precise Painting, Inc.
 Robert A Tucknott & Associates Inc
 Robinson Construction Co.
 Rogers & Willard Inc.
 Rogers-O'Brien Construction Company
 Roll- Lift USA

STEP DIAMOND MEMBERS (cont.)

Rollcon
 Roy Anderson Corp
 RPM Services Inc
 RSH Construction, Inc.
 RSI Roofing, Inc. ●
 RUSH Construction, Inc.
 S-B Construction Group LLC
 S. A. Fabrication, LLC ●
 S. B. Ballard, Inc.
 S. Houran USA Contractors, LLC
 S.E.T. - Pacific, Inc.
 S&B Engineers and Constructors, Ltd. ●
 Sabel Mechanical, LLC
 Samet Corporation
 Sand Valley Builders, LLC ●
 Sanderson Construction Co., Inc.
 SanDow Construction
 Satterfield & Pontikes Construction Inc.
 Savage Land Solutions
 SAW Contracting, Inc. ●
 Saybr Contractors, Inc.
 SCF General Contractors LLC
 Schaefer General Contracting Services, LLC
 Schaffhouser Electric Company
 Schaus Mechanical, Inc.
 Scheibel Construction ●
 Scissor Tail Construction
 Scott-Long Construction, Inc.
 Scott, Murphy & Daniel
 SDV Construction, Inc.
 Seal Rite Paving & Grading
 Seufert Construction
 Shawn Cole Construction, Inc.
 ShayCore, LLC ●
 Siera Mechanical LLC
 Sigma Marble & Granite-Florida, Inc. ●
 SJ Carney Maintenance, LLC
 Skanska USA Building Inc. ●
 SKR Construction, LLC
 Sky Builders USA LLC
 SLAM Construction Services

Slayden Plumbing & Heating, Inc.
 Smith Service Corporation
 Smith-Doyle Contractors Inc
 Smucker Company
 Sole Contracting, Inc.
 SouthCon Building Group, LLC
 Southern Carpet, Hardwood and Tile, Inc.
 Southern Gulf Solutions LLC
 Southern Underground of Louisiana
 Southway Builders, Inc.
 Southwest Coating Services
 Southwest Drywall
 Southwest Electrical Contracting Services, Ltd.
 SpawGlass Contractors, Inc.
 Specialty Plaster, LLC
 Sperry & Associates, Inc.
 SPES Contracting LLC
 SPG Construction
 Spohn Ranch, Inc.
 Standard Constructors, Inc.
 STARCON, A Cianbro Company
 State Service Co., Inc. ●
 Stefanik Electric, LLC
 Steinberger Construction, Inc.
 Stellar Group, Inc.
 Stewart/Perry Company, Inc., The
 Straga Bros., Inc.
 Straight Edge Customs
 Straub Construction Co., Inc. ●
 Stutts Corporation, Inc.
 Suffolk Construction Co., Inc.
 Sullivan Construction, LLC
 Summit Construction Co., Inc.
 Summit Industrial Construction, LLC
 Superior Crane Rental, Inc. ●
 Swinerton
 Syncon, LLC
 TAP Industrial Services, Inc.
 Taurus Industrial Group
 Tazewell Contracting
 TDIndustries, Inc.



“Fifteen years ago, our company recognized an issue with our approach to jobsite safety and decided to completely overhaul our program. We leveraged our ABC membership to the fullest, learning from our local ABC Safety Forum and applying information from the materials published by ABC. STEP served as our roadmap, with additional ABC resources providing detailed instructions. Today, our program ensures our employees return home healthy every day and helps us secure more projects; it’s also saved us over \$3.3 million in workers’ compensation premiums.”

*—Charles E. Davis III, Vice President,
 Operations/Risk Management, Fly & Form Concrete Structures Inc.
 STEP Platinum, ABC National Health and Safety Committee Member*



“STEP is vital to Ivey Mechanical Co., as it ensures our team consistently adheres to the highest safety standards. Safety improvement is a journey! Utilizing the STEP key components, we identify best practices and strengthen our efforts to protect our employees and enhance operational efficiency. Ultimately, STEP reinforces our commitment to the well-being of our team and our ability to provide quality services safely. We are proud to be one of ABC’s top safety performers!”

*—Thad Harrell, Safety Director, Ivey Mechanical Co.
 STEP Platinum, ABC Accredited Quality Contractor and ABC Top Performer*

Teal Construction Company
 TEI Electrical Solutions
 Tellepsen
 Temporary Wall Systems Meadowlands
 Terminus Roofing and Restoration
 Terracon
 Territorial Scaffold, Inc.
 Testcomm LLC
 Thassian Mechanical Contracting, Inc. ●
 The Berg Corporation
 The Brevard Company
 The Brock Group ●
 The Christman Company
 The Collage Companies
 The Gonzalez Group
 The McDonnell Group, LLC
 The Norwood Company
 The Sandel Corporation
 The Winter Construction Company
 Thermal Polymer Systems, LC
 Thermal-Tec/Michigan, Inc.
 Thermaltech, Inc.
 Third Coast Electric
 Thomas Construction Group, LLC
 Thomas Electric, Inc.
 Thompson Engineering, Inc.
 Three Rivers Corporation
 Tic - the Industrial Company
 Tidewater Builders, Inc.
 Timberlake Construction ●
 Timberline Construction Corporation
 Titan Mechanical
 TJS NY Inc.
 TNT Construction Group LLC ●
 TOLM Group
 Tolunay-Wong Engineers ●
 Top Choice Construction LLC

Trades Unlimited, LLC
 Treasure Fire Equipment, Inc.
 Tri-County Electric Company, Inc.
 Triad Electric & Controls, Inc.
 TriArc Construction LLC
 Triple "S" Industrial Corp.
 Triple Tech Mechanical Services, LLC ●
 TRW Houston
 TST Construction
 TSV Painting, Inc.
 Turner Construction Company
 Turner Industries Group, LLC
 Tusco, Inc.
 UJAMAA Construction - Southeast
 United Contractor Services, LLC ●
 United Group Services, Inc. ●
 Unity Flooring Solutions, LLC
 US FUSION & Specialty Construction, LLC ●
 V T Construction
 V.J. Scozzari & Sons, Inc.
 Valex Builders, Inc.
 Vanar Construction Corp.
 Vannoy Construction
 VCC, LLC
 VCS Companies
 Vector Electric Corp
 Vel Construction LLC
 Vertex Guam ●
 Victoria Air Conditioning, LTD
 Victory Air Services
 Viking Construction, Inc.
 Visone Construction, Inc.
 Visu-Sewer, Inc.
 VMC Contracting, Inc.
 VMG Construction, Inc.
 Vortex Services, LLC
 VP Peri Painting Co

VSC Fire & Security
 W. G. Yates & Sons Construction Company
 W.M. Jordan Company
 W.S. Cumby Construction ●
 W.S. Nielsen Company, Inc.
 W.T. Byler Co.
 W.T. Kenney Company, Inc.
 Warfeather
 Watts Construction, Inc.
 Wayman Fire Protection, Inc. ●
 Wayne's Acoustical & Drywall, Inc.
 WB Moore
 Weaver & Jacobs Constructors, Inc.
 WELBRO Building Corporation
 Westcraft Builders, Inc.
 Western Specialty Contractors ●
 Westgate, LLC ●
 Westinghouse Electric Co. LLC
 Whitaker Construction Co Inc.
 White Construction Co.
 Wilco Contracting LLC
 Williams Building Company, Inc. ●
 Wondra Construction, Inc.
 Woodward Design+Build ●
 Wu & Associates, Inc./Design Builders & General Co
 Wurster Construction Co., Inc.
 Yarussi Restoration & Cleaning LLC ●
 Zaho Global Architectural Millwork ●
 Zakalak Restoration Arts, LLC
 Zarko Enterprises, Inc.

ABC STEP PLATINUM MEMBERS

6 Brothers Contractors LLC ●
A & M Drywall Construction, Inc. ●
A.J. Kirkwood & Associates, Inc.
A.J. Moore Electric, Inc.
ABCO Electric, LLC
ABEC Electric Company LLC
Able Construction Group, Inc.
Academy Construction Inc.
ACB General Contractor
ACE Glass Construction Corporation
ACI Mechanical, Inc.
Action Industries, Inc. ●
Adams Electric Company ●
Adler North America Services ●
ADP Group Inc.
Advantage Glass, LLC
AE Electrical Solutions
Airco Mechanical, Ltd.
AirTac, LLC ●
Ajax Building Company, LLC
Aladdin Construction Co., Inc.
All County Sewer & Drain Service Inc.
All Star Electric, Incorporated
All State Construction, Inc. ●
All Vinyl Fencing, LLC
All-Star Plumbing Solutions, LLC
Allfirst, LLC
Alpha Insulation & Waterproofing, Inc.
Alpha Insulation and Waterproofing, Inc.
Alpha Mechanical, LLC
Amergy Solar Inc.
American Boiler & Mechanical
American Constructors ●
American Environmental Group, LTD ●
American Insulation and Scaffolding ●
American Mechanical, Inc.
American Plumbing Contractors
Americrane Rentals
AMP Quality Energy Services

Amteck, LLC ●
Anderson Environmental Contracting LLC
ANS Construction LLC
Applied Construction Solutions
Architectural Metals, Inc. ●
Ard Contracting, Inc.
Arista Renovation, Inc.
Ark Wrecking Co. of Oklahoma, Inc. ●
Arrow Construction Resources ●
Arte Contractors LLC
Ashmen Installation Inc
Associated Scaffolding
Atlanta Trading and Engineering Consulting LLC
●
Atlantic Restoration & Waterproofing, Inc. ●
AUI, Inc.
Automatic Door Systems LLC ●
Avalon Bay Communities, Inc.
avb
AVI-SPL LLC
Babl ●
Bailey-Harris Construction Co., Inc. ●
Baker Construction & Development, Inc.
Bald Hill Builders, LLC
Bay Area High Reach, Inc. ●
Bay Area Lightworks, Inc.
Bay Tech Engineering, Inc.
Bayland Buildings, Inc.
BCI, Inc. D/B/A Butler Company ●
Benaka, Inc.
Bender Wasenmiller Custom Builders, Inc.
Bentley Builders LLC
Bergelectric Corp
Bergen Fence LLC ●
Best Electric
BF Joy, LLC
BGD Contracting LLC
Bi-Con Services, Inc.
Big D Metalworks

Billy Contracting & Restoration, Inc.
Birdsong Construction Co., Inc.
Black Rose Welding LLC
Blackwood of DC, LLC ●
Blue World Construction Inc.
Bob Anderson Builders, Inc.
Bob's Metals, Inc. ●
Bonnette, Page & Stone Corp.
Bowman Constructors
Bracken Companies
Brazos Masonry
Brechtbill & Helman Const. Co., Inc. ●
Brent Scarbrough & Company
Brislin, Inc.
Broadmoor, LLC
BT Partitions Inc. ●
Buist
Buterick Bulkheading, Inc.
Butler Balancing Co., Inc. ●
C & C Electric Inc.
C & K Services, Inc.
C-Sharpe Co., LLC
C. Davis Electric Co., Inc.
C. S. Beatty Construction, Inc. ●
C.M. High, Inc.
C.M. Richey Electrical Contractors, Inc.
C.O. Falter Construction Corp.
Cal's Roofing LLC ●
Callahan Construction Managers
CAM Industrial Solutions, LLC
Campbell Plumbing & Mechanical Contractors
Southeast, Inc.
Camtek, Inc.
Cantera Concrete Company LLC
Canyon Contracting, Inc.
CAP Innovative Design, LLC
Capital Coating ●
Capital Industries
CarolinaPower ●

Carroll Daniel Construction
Cascade Integration Inc.
Cassa Commercial Electric, Inc.
Cavan Construction Co., Inc.
CB&I Storage Tank Solutions
Centennial Contractors Enterprises, Inc.
Centrifugal Lining, Inc.
Century Construction Group, Inc.
Century Electric ●
Century Fire Protection ●
Champion Electric, Inc.
Chesapeake Contracting Group
Chesapeake Controls, Inc.
Chlach1 Builders
Choate Construction Company
Christian Brothers Mechanical Services, Inc.
City Elevator Service LLC ●
Clouse Construction Corp. ●
CMG of Easton
CNC Foundations, Inc.
CNN Electrical Inc.
Coakley & Williams Construction
Coastal Heating & Air Conditioning Co., Inc.
Coastal Technical Sales, Inc.
Cole Roofing Company, Inc.
Collins Construction and Company, LLC ●
Collis Roofing
Colonial Electric Company, LLC
Complete Mechanical Services, LLC
Comprehensive Energy Services, Inc.
Concrete & Materials Placement
Conewago Enterprises, Inc.
Conewago Manufacturing, LLC ●
Consolidated Contracting Solutions, LLC
Converse Conditioned Air, Inc. ●
Cook Engineering, Inc.
Cooper Construction Co., Inc. ●
Coppola Services Inc.
Corcoran Glass And Paint ●

“We participate in STEP, and we have found great deal of value in self-reflection about what our safety program is made of. ABC also helps us forge a better relationship with OSHA because we bring them to our jobsites voluntarily for inspections every year, and those inspections go well time and time again. That’s a testament to what we have learned from ABC and from framing our safety program around the STEP process.”

—Joel Loes, Executive Vice President, Klinger Constructors
STEP Gold

“The future of our industry depends on a great safety program. STEP helps ABC members see what is possible and achieve greatness! That means greatness for their employees and their families, along with company growth and a reputation for excellence. We should all strive to be great!”

—Heidi Gerke, Safety Director
ABC Inland Pacific Chapter

“We have employees who are highly involved with the ABC STEP program. As a general contractor in construction, safety is at the top of our list every day.”

—Chris Baca, CEO, Enterprise Builders Corp.
STEP Bronze

Core Glazing Solutions, LLC
Core Tech International ●
Cornerstone Masonry Construction ●
Correct Electric, Inc.
Coverflex Manufacturing Inc.
Crossland Heavy Contractors, Inc.
Crowder Construction Company
Crux Subsurface, Inc.
CS Erickson
CSI Construction, Inc.
Cummings Electrical, Inc. ●
Custom Aire, Inc. ●
Cyncal Steel Fabricators ●
D.E. Gemmill, Inc.
D.J. Wagner Heating & Air Conditioning
D'Elia Electric Inc.
D'Onofrio General Contractors Corp.
Dahmer Contracting Group
Damuth Trane ●
Danis Construction
Danos ●
David Crowell Electric, Inc.
David Tucker Construction LLC
DAVIS Construction ●
Davis Schueller, Inc.
Deacon Construction, LLC.
Del Rio Enterprises, Inc. ●
Delaware Elevator, Inc.
Dennis Electric Inc
DenTech Industrial
Develop Builders
DexKo Construction Services ●
DHE Plumbing & Mechanical LLC
Dilling Group, Inc.
Direct Scaffold
DiSabatino Construction Company ●
DJ's Painting Local, Inc.
Doggett Concrete Construction
Donohoe Construction Company
Donovan Brothers, Inc.

Drees Heating & Plumbing, Inc.
Drillcore, LLC
DRYCO
DT Specialized Services
Dunn Building Company, LLC ●
Dunn Construction Company, Inc.
Durr Heavy Construction, LLC
DynaTen Corporation
E-Z Painting, Inc. ●
E.E. Reed East Coast, LLC
E.W. Tompkins Company, Inc.
Eagle Fire Inc. ●
East Coast Plumbing and HVAC, Inc. ●
Eastec, Inc.
Eastern Elevator Service & Sales Co. ●
Eastern Heating & Cooling, Inc.
Easy Does It Drywall, Inc.
Econolite Systems, Inc. ●
Ecoservices, LLC
Edifice, LLC
Edward Kurth & Sons, Inc. ●
Edwards Plumbing, Inc.
Eldeco, Incorporated
Elm Electrical, Inc. ●
EMCOR Services New England Mechanical
Emergent Wireless Solutions
Emery Sapp & Sons, Inc. ●
Empowered Electric ●
Endurance Sports Floors LLC
Engasser Construction Corp
Enhanced Electric Services Inc.
Ennis Electric Co., Inc.
Enterprise Solutions ●
EnviroControl Systems
Environmental Systems Corporation of
Huntsville
EnviroTrac Ltd. ●
Epic Access Solutions
Erhardt Construction Co.
Erland Construction, Inc. ●

Esposito Industries, LLC ●
Evans General Contractors
Evergreen Innovation Group LLC
Everon
Exceed Safety LLC ●
Excellco Coating, Inc.
Extreme Construction Inc.
F.G. Rayburn Mason Contractors, Inc.
Facility Solutions Group (FSG) Austin
Fallproof Systems LLC
FaverGray ●
FCI Constructors, Inc.
Ferguson Trenching Co., Inc.
Ferrer Mechanical & Electrical Services, Inc. ●
Finfrook Construction, LLC ●
FireTron
Fisher Sand & Gravel Co., Inc.
Flagstar Construction Company, Inc.
Flame On, Inc.
Flex-Erect
Fly & Form Concrete Structures, Inc. ●
Flynn Brothers Contracting, Inc.
Flynn Companies
Flynn Construction, Inc.
Flyway Excavating, Inc.
Force Corporation
Fordice Construction Company
Forgen
Fortis General Construcion, Inc.
Four C's Construction
Frank J. Ryan & Sons, Inc.
Fureigh Electric, LLC
G-Force Waterproofing & Restoration, LLC
G. C. Dynatech Construction, LLC
Galia Construction Inc.
Garber Electrical Contractors, Inc.
Garrison Steel Fabricators
GarVin Construction, Inc.
GB Shades
Geiter Done of WNY

● Denotes ABC 2025 Top Performers

STEP PLATINUM MEMBERS (cont.)

Gene Frederickson Trucking & Excavating, Inc.
 George Koustas Painting, LLC
 Gerald Nell Inc.
 Gillespie Roofing, Inc.
 GKS Electric
 Gorski Engineering, Inc.
 GR Electric, LLC ●
 Grady Excavating, Inc. ●
 Green Country Interiors, Inc.
 Green Leaf Construction LLC ●
 Green Mechanical Construction, Inc.
 Greenhut Construction Company, Inc.
 GreenSpark Solar ●
 Greenwood Abatement Consultants, Inc.
 Gregory Construction ●
 Greiner Electric
 Grunley Construction Company, Inc. ●
 GSL Electric, Inc.
 Gypsum Systems, LLC ●
 H & H Door Company ●
 H & S Services LLC
 H. Lamm Industries, Inc.
 H&S Industrial, A Viocity Company
 H5 Electric, Inc.
 Hamanaka Painting Co., Inc.
 Harbor Roofing and Contracting, Inc
 Hartford South, LLC
 Harvey W. Hottel, Inc.
 Harvey-Cleary Builders
 Hayden Power Group ●
 Hear Construction Inc.
 Hensel Phelps
 HGC Construction Co.
 High Performance Systems Corp
 HighPoint Electric, Inc.
 Hinson Electric, Incorporated
 Hometown Mechanical
 Horizon Construction Group, Inc.
 Hourigan ●
 HRGM Corporation

HST Construction
 hth companies, inc.
 Hypower LLC
 Icenogle Construction Management, Inc.
 ICI Flooring Inc.
 Ickler Electric ●
 Ideal Construction Company
 IES Commercial, Inc.
 Innovative Construction Solutions
 Insituform Technologies
 Integrated Construction Ent., Inc.
 Integrated Technical Systems, Inc.
 Integrity Environmental Solutions, LLC
 Interstate Contracting and Restoration
 Interstates
 Iron Hills Construction Co Inc.
 Ivey Mechanical – MBU ●
 Ivey Mechanical Company, LLC
 J & M Steel Solutions, Inc.
 J. L. Roberts Mechanical Contracting ●
 J. Louis Crum Corp. ●
 J.E. Abercrombie, Inc.
 JAMCo, Inc. ●
 James Lane Mechanical
 Jarrett Construction Services, Inc
 JCM Associates, Inc. ●
 JD General Construction, Inc. ●
 Jersey Firestop, LLC
 Jesse Stutts, Inc.
 JGM Fabricators & Constructors LLC
 JGR Construction, Inc.
 Jhonatan Trucking LLC ●
 JJID, Inc. ●
 John Buchan Homes
 Johnny On the Spot, LLC
 Jones Painting
 Jones Valley Fabrication
 Joseph Construction Co., Inc.
 Joseph Tavone Incorporated
 K.C. Charles, Inc.

K.E.V. Services LLC
 Kaplan Construction
 Kappa Construction Corp. ●
 KARZA CONSTRUCTION LLC
 Kast Construction Company, LLC
 Kaufman Lynn Construction
 KBD Group (Kajima Building & Design Group, Inc.)
 Keen Project Solutions
 Kencor Elevator Systems, Inc.
 KENPAT
 Keystone Sports Construction ●
 Killian Construction Co./KCC Contractor, Inc.
 Kilowatt Electric Co. ●
 Kitchell Contractors, Inc.
 Klebs Mechanical, Inc. ●
 Klinger Companies/Younglove Construction, L.L.C.
 Klover ●
 Knight Const. & Supply, Inc. ●
 Knobelsdorff Enterprises
 Koppers Railroad Structures, Inc.
 Kronenberger & Sons Restoration, LLC
 KS Industrial Painting
 KS Plumbing, Inc.
 Kusant Electric, Inc.
 L P Roofing, LLC ●
 L.D. Strobel Co., Inc.
 Landis Construction
 Landover Cooling Tower Service, Inc.
 Laser Concrete ●
 Laser Electric, Inc. ●
 LEAD Staffing
 Lee Company
 Lee Contracting, Inc.
 Lee Lewis Construction
 Lee Mechanical Contractors, Inc.
 Leeding Builders Group ●
 Live Oak Construction
 Locke Solutions Precast Division

Long Fence Company, Inc.
 Longhorn Construction Services, Inc. ●
 Lowcountry Technologies LLC
 Lowder Electric & Construction Corp
 Lueder Construction Company
 M. E. Wood Construction, LLC
 M&M Energy Solutions, Inc.
 M&M Lawn Services LLC
 Maary Waterproofing, Inc. ●
 Madden Industrial Craftsmen, Inc.
 Mader Southeast
 MAG Insulation, Inc.
 MALEK, INC.
 Manganaro Midatlantic, LLC ●
 Marathon Electrical Contractors, LLC.
 Marker, Inc.
 Martin Concrete Construction, Inc.
 Martin Roofing Services, Inc.
 Martin-Harris Construction
 Matrix Electric Contractors, Inc
 McCartney Industries, LLC
 McCormick Construction Company ●
 McInnis Construction, LLC
 MEC General Contractors
 Mechanical Contractors, Incorporated ●
 Mechanical Preservation Associates, Inc.
 Mechanical Services of Central Florida, Inc.
 Medford Wellington Service Co., Inc.
 MEI Rigging & Crating
 MEP Holdings, Inc.
 Metals Treatment Technologies, LLC
 Methuen Construction Co., Inc. ●
 Metropolitan Contracting Co., LLC
 MF Builders LLC
 Michael F. Ronca & Sons, Inc. ●
 Middlebury Electric, Inc.
 Milherst Construction, Inc.
 Mill Creek Residential
 Miller & Long Co., Inc.
 Miller Construction Company


MJM Masonry, Inc. ●
 Modern Plumbing Industries, Inc.
 Modesto Executive Electric, Inc. ●
 Modular Electric, Inc.
 Moon Construction Services, Inc.
 Moore Erection, L.P.
 Morgan's Constructive Solutions, LLC ●
 MSA Contracting, LLC
 MTech Mechanical
 Multi-Weld Services, Inc.
 Murray Drywall & Insulation of Texas, Inc.
 MVE Group
 Myco Mechanical, Inc. ●
 N-RG Cladding, LLC
 N. S. Giles Foundations Inc
 Nabholz
 Narum Concrete Construction, Inc.
 Nations Roof
 Network Interiors, Inc.
 New Jersey Overhead Door
 New Roc Contracting Corp.
 Newton Building & Development, LLC
 Nickerson NY, LLC ●
 Nickle Electrical Companies
 Niles Plant Services
 Niram, Inc.
 Nordic Industries, Inc.
 North American Mechanical, Inc. ●
 Northeast Builders Inc.
 Northeast Roof Maintenance, Inc.
 Northeastern Interior Services, LLC
 Nova Group, Inc.
 Oelrich Construction, Inc.
 Oil Capital Electric, LLC
 Old Dominion Coatings, LLC ●
 Old Dominion Mechanical, LLC
 OM Heating and Air Conditioning, LLC
 Oregon Climate Tech ●
 Orly Building Solutions, Inc. dba Orly Co., Inc.
 Overland Constructors, Inc.



Oz Steel Inc.
 P & C Roofing, Inc.
 P. Cipollini, Inc.
 Pacific Federal Management, Inc.
 Pacific Northwest Masonry and Design LLC
 Pacific Window Systems, Inc.
 Painting By Pearce
 PALA-Interstate, LLC ●
 Paramount Facility Management Solutions
 Parking Lot Services, LLC
 Partner Contracting, LLC ●
 Pat Williams Construction
 Paul Otto Building Company
 PBC Group LLC
 PCL Construction Services, Inc.
 PCL Industrial Services, Inc.
 PDS Engineering & Construction, Inc.
 Penhall Company
 Peninsular Mechanical Contractors, Inc.
 Penn Valley Constructors, LLC
 Perrier Esquerre Contractors, LLC
 Pete King Corp.
 Phoenix Electric Company
 Picerno-Giordano Construction, LLC
 Pillar Construction, Inc.
 Pincus Elevator Company, Inc.
 PKG Contracting, Inc.
 Polick Construction LLC
 Post Brothers
 Power & Construction Group, Inc.
 Power Design, Inc.
 Power Electric Co. ●
 Power Lighting & More Electric Company LLC
 Power Solutions Group, Inc
 Power Up Elevator LLC
 PowerWorks Electric ●
 Prayosha GMC
 Precision Concrete Construction, Inc.
 Premier Safety LLC
 Preziosi Construction Corp.

Pride Electric, LLC ●
 Prism Electric, Inc.
 Prospect Waterproofing Co.
 PSP Construction Inc.
 Quality Electrical Construction
 Quality Erectors & Sheetters, Inc.
 Quality Glass Co., Inc. ●
 Quality Sheet Metal & Welding, Inc.
 R and G
 R. J. Grondin & Sons
 R. W. Murray Co. ●
 R.H. White Construction Co., Inc.
 R.S. Phillips Steel, LLC
 Rabren General Contractors ●
 Radec Electric Corporation
 Rain For Rent
 Rampart Enterprises, Inc
 Randall Family of Companies
 Randazzo Enterprises, Inc.
 Ready Mix USA ●
 Reagan Marine Construction LLC
 RECO Construction
 Red River Construction LLC ●
 Redhawk Group ●
 RedZone Robotics, Inc.
 Regency NW Construction, Inc.
 Register Roofing & Sheet Metal, Inc.
 Reliant Drywall, Inc.
 Remedi8, LLC
 Republic Refrigeration, Incorporated
 Retro Insulation
 Rex Moore
 Right Elevator
 Ritsema Associates
 Rives Construction Co., Inc.
 RK Electric, Inc.
 RNA Services LLC ●
 RNR Contractors, Inc.
 Robins & Morton
 Robinson Electric Co., Inc. ●

Rock Spring Contracting, LLC
 Rockford Construction Co. ●
 Rodda Electric, Inc.
 Rodgers Builders ●
 Roger's Paving Contracting Inc.
 Rogers Group, Inc. ●
 Rolling Plains Construction, Inc.
 Romax Group Inc
 Royal Construction, Inc.
 Royal Electric Company
 Rubbercycle LLC
 Rudick Construction Group
 Runnebohm Construction Co.
 Russell Construction
 RW Mundhenk Outdoor Design Inc.
 Rybicki Construction LLC
 S & T Windows LLC ●
 S. I. Goldman Company, Inc.
 S. W. Funk Industrial Contractors, Inc.
 Saber Power Services
 Safety Improvements, LLC
 Safeway Contracting, Inc.
 Safeway Electric
 Salinas Valley Electric
 Salon Interiors, Inc.
 Samna Construction & Steel Fabrication Limited Liability Co
 Sampson Construction Co., Inc
 SANAIR Indoor Air Quality
 SBAY Construction Inc.
 Scaffold Resource, LLC ●
 Scaffolding Solutions, LLC
 SCC Electric, Inc.
 Schlouch Incorporated ●
 Sealevel Construction, Inc.
 Sears Contract, Incorporated
 Seif Construction & Trading LLC
 Selective Masonry, Inc
 Serg Painting LLC
 Service Complete Electric, Incorporated

STEP PLATINUM MEMBERS (cont.)

 Denotes ABC 2025 Top Performers

Service Unlimited, Inc.
 Servpro of Woodbury/Deptford
 Sevan Multi-Site Solutions
 Shapiro & Duncan, Inc. 
 Shaw Brothers Construction, Inc.
 Shaw Electric, Inc.
 Shore Communications
 ShureLine Construction, Inc.
 Sierra Valley Painting, Inc.
 Simonson Construction Services, Inc.
 Skycore Builders, Inc. 
 Skyline Steel Fabricators & Erectors, LLC
 Slate Roof Professionals
 Slater & Son, Inc.
 Sluss+Padgett
 Sobie Co., Inc.
 Sobieski Mechanical Contractors, Inc.
 Sollmann Electric Co.
 Southeastern Mechanical, Inc.
 Southern Mechanical Contractors, Inc. 
 Southern Wall Systems II 
 Southland Concrete Corp.
 Sovereign Consulting Inc.
 Spacecon Specialty Contractors, LLC
 Spark Contractors
 Spear D Construction
 Specialized Electric Of WI, Inc.
 Sports & Tennis Construction LLC
 Sprinklermatic
 SR Construction Inc. 
 SR Trident, Inc.
 Staker Parson Materials & Construction
 Stanley & Orke, Inc.

Starr Electric
 Steel Clad 
 Steele Foundation, LLC
 Stelco Electric, LLC
 Stewart Electric Co., Inc.
 Stewart Iron Works
 Stone Building Company
 Suburban Enterprises, Inc.
 Suburban Glass & Mirror of Ridgewood Inc.
 Supreme Structures, Inc. 
 T.W. Frierson Contractor, Inc.
 T&W Corporation
 Tarlton and Son Inc.
 TBS Contractors
 TEAM Construction, LLC.
 Technotime Business Solutions LLC
 Tecta America Zero Company
 Ted Turner Company, Inc.
 TEEL Construction, Inc.
 Temporary Wall Systems Hartford 
 TEO Technologies, Inc.
 Terrasmart
 The Anderson Co., LLC
 The Bouma Corporation
 The CBR Group
 The Cherokee 8A Group Inc.
 The Circle Group
 The Edgewood Company, Inc. 
 The Essex Group
 The Highland Group 
 The MacKenzie Companies 
 The Tri-M Group, LLC
 The Wakefield Corporation 

The Weitz Company
 Thermal Concepts, LLC.
 Thermal Insulation, Inc.
 Thesis Painting, Inc.
 Tiny's Construction, LLC
 Titan Construction & Engineering Services
 Corporation
 TLC Construction Contract Services, Inc.
 TMG Construction Corp. 
 Traffic Control Services
 Trinity Contractors LLC
 Trinity Subsurface, LLC
 Trio Electric 
 Triton Construction Company
 TST Tactical Defense Solution, Inc. DbA TST
 Roofing & Glazing and Tidewater Development
 Services
 Tucciarone Plumbing 
 Tull Brothers, Inc.
 United Roofing Solutions
 USA Building Maintenance Inc. 
 V.O. Brothers Mechanical, LLC
 V&R Roofing
 Valcom Enterprises, Inc. 
 Valley Electrical Contractors, Inc.
 Vasko Electric, Inc. 
 Vertical Transportation Experts
 Viking Seal Coating & Paving LLC
 Vision Electric & Plumbing, LLC
 Vital Mechanical Service
 VMS Construction Company
 W.D.S. Construction, Inc. 
 W.M. Schlosser Company, Inc.

W.M. Schultz Construction 
 Wagman Construction, Inc.
 Wakeland Electric, Inc.
 Walker & Company, Inc.
 Wallace Brothers, Inc.
 Wallace Construction
 Wallace Steel 
 Wallworks, Inc.
 Wanzek Construction, Inc.
 Watson Electrical Construction
 Watts Electric Company
 Way Mechanical
 WCS Construction, LLC
 Weld-Done Welding, Inc. 
 West Coast Air Conditioning Co. Inc.
 Western Engineering Contractors, Inc.
 Weston Solutions, Inc.
 White Rose Interiors, LLC
 White-Spunner Construction, LLC
 Wilcon Winsupply
 William R. Nash, LLC
 Willow Construction, LLC
 Windsor Mechanical LLC
 WMG Historic Restoration LLC
 Wolf Construction Services, Inc.
 Wolf Innovations LLC
 Wolgast Corporation 
 Wood Group USA, Inc. - US South 
 Worth & Company, Inc.
 Worth Plumbing NJ LLC
 Zachau Construction, Inc.
 Zartman Construction, Inc.
 Zooguy Restorations LLC

Glossary of Common Terms

ABC – Associated Builders and Contractors, a construction trade association representing more than 23,000 merit shop contractors and affiliated firms nationwide.

Accredited Quality Contractor – ABC’s credential recognizing members’ commitment to corporate responsibility in quality, safety, talent management, education and community relations.

BLS – U.S. Bureau of Labor Statistics, a federal agency responsible for providing statistical analysis on workplace injuries, illnesses and fatalities. Operates under the scope of the U.S. Department of Labor.

CCDAFW – Construction Coalition for a Drug- and Alcohol-Free Workplace, established in 2012 by construction trade associations to develop resources in the campaign to eliminate substance abuse in the industry.

DART – Days Away, Restricted or Transferred rate. Measures the number of cases per 100 full-time employees where an injury or illness causes an employee to be restricted or transferred based on inability to perform normal job functions.

Disrupted Life/Lives – Nonstatistical term used to describe the impact on the employee, friends and family when a life has been disrupted because of

an injury suffered during work hours.

EMR – The Experience Modification Rate or “mod factor.” Calculation normally performed by the insurance industry (National Council on Compensation Insurance or state-level agency) reflecting percentage of workers’ compensation payouts by a company compared to a company of similar size and type.

FTE – Full-time employee as defined by BLS and captured on a company’s OSHA Form 300A, which tracks the number of full-time employees that a company employs in the course of a calendar year.

Good Catch – The recognition and correction of a hazardous condition or event that, if it occurred, would likely not cause death, serious physical harm or extensive property damage.

Leading Indicators – A measure preceding or indicating a future event that is used to drive and measure activities carried out to prevent and control injury, such as safety training, new hire health and safety orientation and top management engagement.

Lost Life/Lives – Nonstatistical term used to describe a fatality caused by an injury suffered during work hours and the long-term impact, beyond the lost life, on family, friends and colleagues.

New Hire Safety Orientation – Amount of time, in minutes, that a company devotes to covering safety-related topics during orientation for all new employees.

OSHA – The Occupational Safety and Health Administration, a U.S. government agency tasked with establishing workplace safety and health requirements and enforcement of existing rules. Operates under the scope of the U.S. Department of Labor.

OSHA Form 300A – The “Summary of Work-Related Injuries and Illnesses” required by OSHA for all companies with 11 or more employees. It is created using information gathered from a company’s OSHA Form 300, the “Log of Work-Related Injuries and Illnesses.”

Potential Significant Event – The recognition and correction of a hazardous condition or event that, if it occurred, would likely cause death, serious physical harm or extensive property damage.

PPE – Equipment worn to minimize exposure to hazards that cause serious workplace injuries and illnesses. These injuries and illnesses may result from contact with chemical, radiological, physical, electrical, mechanical or other workplace hazards.

Planning for Project Health and Safety –

Evaluating safety, quality and efficiency processes to eliminate hazards and accident potential during the identification of potential projects. Continuing that process in the estimating, pre-bid planning, bidding, sourcing, permitting, staging, jobsite evaluations, jobsite management planning, job-specific training and repeating the process for any work order changes or job scope/plan revisions.

Resources for Safety – Funds, time, personnel, equipment, supplies, etc., are regularly budgeted and invested, and the return on safety investment (actual or projected) is tracked to evaluate the effectiveness of resource allocation and to guide future expenditure decisions.

Safety Inspections – A formal process to visually analyze and document jobsite conditions and worker behavior in relation to safety. Generally these are performed utilizing a checklist so the good conditions and behaviors are documented as well as the ones that need to be corrected. Deficiencies that need to be corrected are assigned if they cannot be corrected immediately. Corrective action is documented.

Safety Program Performance Review – Key safety leaders monitor performance and progress, verify the program is implemented and operating as designed, correct program shortcomings and identify opportunities to improve.

STEP – ABC's health and safety management system, created in 1989 to gather data related to member safety performance and to evaluate the effectiveness of health and safety programs based on the key components of industry-leading safety programs.

Substance Abuse Prevention Programs –

Programs designed to reduce incidents that include strict rules regarding drug and alcohol use, supervisor training, recordkeeping and active enforcement. Robust substance abuse prevention programs have an employee assistance program, education on substance abuse prevention and may include drug and alcohol testing.

Task-Specific Safety Process – A formal method to analyze the work to be done, assess hazards that may be encountered and identify controls to eliminate the hazards completely or at least keep them away from workers. These include job hazard analysis, activity hazard analysis, pre-task planning, safety task analysis and others. This process involves establishing a work group that encourages employees to voice concerns and corrective actions to prevent an incident.

Toolbox Talks – Topic-specific, short-format training, usually conducted before the workday or during lunch breaks, aimed at crews and site employees to educate on specific safety and health topics, hazards, policies and procedures.

Top Management Engagement – The owner/CEO is a direct and active participant in the safety program, instilling personal accountability for safety throughout the company. This leader tracks and reviews safety goals, solicits feedback and seeks ways to improve the safety program, commits necessary resources and integrates safety into performance appraisals.

Top Performers – ABC's annual ranking of contractor members that build long-lasting, high-quality construction projects, based on work hours. Visit abc.org/topperformers to learn more.

Trailing Indicators – Metrics used to measure safety performance based on historical data (e.g., incident rate, DART, etc.).

TRIR – Total Recordable Incident Rate. Measures the number of cases per 100 full-time employees where an injury or illness caused a loss of life or a situation resulting in an employee being unable to work (days away), restricted or transferred based on inability to perform normal job functions, or any other injury that falls under OSHA's definition of a recordable incident.

ABC 2024 HEALTH AND SAFETY COMMITTEE

Chair

Francisco Trujillo
Executive Director of Risk Management
Coakley & Williams Construction

Vice Chair

Paul Crivac
Director of Safety
Three Rivers Corp.

Executive Committee Liaisons

Kerrick Whisenant
President
Limestone Building Group

Chapter President Liaisons

Tiffany Brightwell
President
ABC North Alabama

Adam Hanson
President
ABC Minnesota/North Dakota

Staff Liaisons

Matt Abeles
Vice President, Construction Technology and Innovation
ABC National

Aaron Braun
Manager of Safety Programs and Initiatives
ABC National

Josef Burkart
Construction Technology and Innovation Coordinator
ABC National

Joseph Xavier
Senior Director of Health and Safety
ABC National

Members

Michael W. Bennett
Senior Executive Vice President
The Cianbro Cos.

John Bolt
Senior Vice President, HSE
S & B Engineers and Constructors Ltd.

Charles E. Davis III
Vice President, Operations/Risk Management
Fly & Form Concrete Structures Inc.

Eddie W. Evans
Safety Officer
M&D Mechanical Contractors Inc.

Brian Fish
General Superintendent
Hensel Phelps Construction

Phillip Ireland, CHST
Director of Safety
Benchmark Construction Co. Inc.

Scott Lewis
Senior Project Manager
MMR Constructors Inc.

Sissy Martin
Safety Director
Henley Construction Co. Inc.

Marshall Pancoast
Safety Director
Walker Construction Inc.

Chuck Rakich
Superintendent
Henley Construction Co. Inc.

Sandra Roche
Director of Business Development
SR Construction Inc.

Michael Saunders
Safety, Health and Environment Director
Balfour Beatty

Eric Simmons, Ed.D.
Vice President of Risk Management
Helix Electric

Shelley Sutton
Vice President
hth cos. inc.

James K. Thompson
Director of EH&S
Kwest Group LLC

Jorge Vazquez
Director of Safety
MAREK

Ron Williams
Safety Manager
United Group Services Inc.

Advisory Members

Teresa Kee
Director of Corporate Safety
United Rentals Inc.

Melanie Laird
Chief Strategy Officer
Field Control Analytics

Corey B. Rimmer
AVP Risk Control – Construction
CNA

Ron Shanaver
National Account Manager
Milwaukee Tool

The ABC 2025 Health and Safety Performance Report Is Brought to You by:



“DEWALT is obsessed with our end-users—the craft workers—and as part of our commitment to meet their evolving needs, safety is paramount. Safety is infused into every aspect of our design and product development process, ensuring that DEWALT tools and technology are equipped with features that protect the user, make them more effective, give them more comfort and control, and ultimately get them home in the same shape in which they stepped onto the jobsite.”

—Frank Mannarino
General Manager, DEWALT

Visit DEWALT.com to learn more.



440 First St. NW, Suite 200
Washington, DC 20001

For more information, contact:

Joe Xavier
ABC Senior Director, Health and Safety
xavier@abc.org

abc.org/spr

MAY 2025